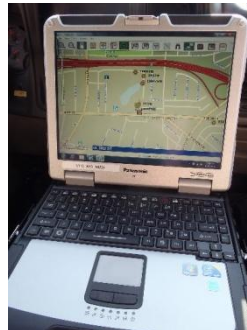




East Los Angeles Station receives new technology

The Los Angeles County Sheriff's Department proudly announces the deployment of over 1,000 Mobile Data Computers (MDC), installed in marked and unmarked Sheriff's radio cars and motorcycles. The computers were formally introduced November 2, 2011, by the Los Angeles County Sheriff's Department Communications and Fleet Management Bureau as part of the Mobile Data Computer Systems (MDCS) Project, in partnership with Raytheon to provide deputies with faster and more detailed information while working in the field. East Los Angeles Station has over 24 cars equipped with these new Mobile Data Computers.

The MDC has the capacity to provide information such as Global Positioning System (GPS), internet service, fingerprint databases, DMV information, Automatic License Plate Recognition (ALPR) System, and much more to remote locations using advanced processing systems developed through Raytheon.



Old Mobile Digital Terminal New Mobile Data Computer

Captain Scott Edson, Bureau Commander of the Communications and Fleet Management Bureau, said, "The Mobile Data Computer was the foundation of our future. With over 1,000 deployed, we now have the foundation for new technologies, which have become more efficient, and better serve the public.

"Today, the MDC provides us access to various systems such as computer aided dispatch, vehicle mapping, field based reporting, county wide warrant system, DMV information and photographs, wanted person flyers, photos of missing children, Amber Alerts, probation and parole information, community based services, and many other law enforcement data sources we never had access to before. Additionally, should we be unable to identify an individual we had reason to detain, a fingerprint reader is included which interfaces to the MDC."

Captain Edson went on to say, "The bottom line is the MDC brings much more knowledge to the field deputy, allowing him/her to be more responsive to the community and fight crime. A dispatcher can see a deputy's location relative to a call for service improving response times, deputies can see each other when responding to contain a crime location and simply fill in the gaps, and so much more. We will continue to look for technologies that will make us more efficient and improve our ability to serve the county residents and visitors."

Since the inception of the MDCS Project, over 1,000 MDCs have been deployed to more than half of the Los Angeles County Sheriff's Department's 26 patrol stations and bureaus, with 3,000 deputies trained to use them.

Sheriff Lee Baca said, "Raytheon worked closely with our sheriff's deputies, engineers and technicians to integrate the latest public safety technologies and capabilities into our vehicles. This new mobile data computer system will greatly increase the efficiency of deputies in the field, providing them more knowledge at their fingertips, and enabling them to do more for the public now and in the years ahead."

T.J. Smith, Sergeant

James P. Wolak, Captain

East Los Angeles Sheriff's Station

Los Angeles County Sheriff's Department

(323) 264-4151

<http://www.EastLA.lasd.org>

ELANews@lasd.org

www.Nixle.com : LASD Text and Emails

<http://local.nixle.com/lasd---east-los-angeles-station-los-angeles-county-sheriff/>

Twitter @LASD_News http://twitter.com/#!/LASD_News

<http://www.facebook.com/LosAngelesCountySheriffsDepartment>

Leroy D. Baca, Sheriff

Los Angeles County Sheriff's Department

Partner to prevent or report crime by contacting your local Sheriff's station. If you wish to remain anonymous, call "LA Crime Stoppers" by dialing 800-222-TIPS (8477), texting the letters TIPLA plus your tip to CRIMES (274637), or using the website <http://lacrimestoppers.org>

To receive more detailed, up-to-date information directly from the Los Angeles County Sheriff's Department (LASD) via e-mail, register for "Nixle" alerts at www.Nixle.com or more directly at <https://local.nixle.com/register/> and register for "LASD – Headquarters Newsroom (SHB), Los Angeles County Sheriff" and "LASD - East Los Angeles Station, Los Angeles County Sheriff", text your zip code to 888777 to receive text alerts only. Standard text messaging rates may apply depending on your calling plan.

Address/Location

LASD - East Los Angeles Station, Los Angeles County Sheriff
5019 E. 3Rd Street
East Los Angeles, CA 90022

Contact

Emergency: 9-1-1