

How to Describe a Person

Depending on the situation and considering your personal safety, take a good look at the suspect, so that you will be better able to describe the suspect later. Here are some of the things to look for and to report:

- ◆ Sex, Race, Complexion, Age
- ◆ Height (estimate in 2 inch blocks; For example 5'8" and 5'10")
- ◆ Weight (estimate in blocks of 10 pounds, for example 130 to 140 pounds)
- ◆ Build – large, medium, small, stocky, fat, slender, or thin, plus any distinguishing features on parts of the body (tattoos, eyeglasses, etc.)
- ◆ Hair – color, thick or thin, balding or full, sideburns
- ◆ Mustache or beard – describe including color
- ◆ Clothing – type, color, style (start at top and work down: hat, coat shirt, pants, shoes)
- ◆ Method of escape – on foot, vehicle or bicycle



Example: Male, white, approximately 45 years old, between 5 foot 6 and 5 foot 8, 150 – 160 pounds, medium build, gray hair, and long sideburns. Wearing a blue baseball cap, no coat, white shirt, dark pants and sneakers. Last seen at 1st Street and Compton Avenue and headed toward the East Rancho Dominguez Park area (and whether the suspect was on foot, bike, or in a car).

How to Describe a Vehicle

It is also important to be attentive to the details of vehicles. Try to make note of the following features and report them:

- ◆ Color, make, and year
- ◆ Body type – sedan, two-door, convertible, station wagon
- ◆ License number (specific state)

Other identification – exterior attachments, damage, bumper stickers, window decals, etc.

Example: A black, late model Ford, four-door sedan, California license number ABC1234, large dent on rear passenger door, and Oakland Raiders decal on rear window.

The guidelines above are primarily for stationary vehicles. On occasion, you may have to describe moving vehicles, perhaps escaping from the scene of an incident. Try to note the following:

- ◆ Color, make, year, and plate (as above)
- ◆ Direction of Travel

Contact Parks Bureau at:

(213) 974-8000

(800) 834-0064

Useful Websites

WWW.LASD.ORG

WWW.LACOUNTY.GOV

WWW.PARKS.LACOUNTY.GOV

WWW.NIXLE.COM

WWW.CRIMESTOPPERS.COM

WWW.LACOUNTYFRAUD.ORG

Los Angeles County Sheriff's Department's Parks Bureau

PARK WATCH



What is Park Watch?

Park Watch is a crime prevention program for Los Angeles County Parks and Recreation areas. Like a neighborhood watch program, it helps provide Los Angeles County Parks and Recreation employees with information to eradicate crime, drugs, and gangs from our parks. Parks and Recreation employees are the solution; your eyes and ears are a valuable crime prevention tool.

The general rule of thumb is: If the situation looks suspicious then it is suspicious. Trust your judgment and call the Sheriff's Department.

Nobody knows your park better than you do. You know the people, cars and activities that are normal in your park. **YOU ARE THE EXPERT!**

How does Park Watch Work?

Because employees know their parks and communities best, they are better at spotting individuals who are acting suspicious or situations that "just don't look right." A concerned park employee can stop crime by simply reporting crime(s) to the Sheriff's Department or local law enforcement agency. By practicing a few rules and safety tips provided by the Sheriff's Department or local law enforcement agency, you can help make a safe and enjoyable experience for all who visit Los Angeles County Parks and Recreation areas.



Why is there a need for Park Watch?

Park Watch was designed as a way to fight crime by preventing it before it occurs. The main concept of the program is for park staff to stay alert to unusual activity and contact the authorities. It helps eliminate the criminal's two greatest tools: public apathy and easy opportunity. An incident involving theft or vandalism within a Los Angeles County historical, scenic, or recreational park, directly affects a person's level of enjoyment. By implementing this innovative program crime will decrease.

The following are some of the most common crime issues involving Los Angeles County Parks:

- ◆ Theft
- ◆ Alcohol and drug use
- ◆ Vandalism
- ◆ Unauthorized after hours use
- ◆ Boating and motor vehicle violations

How to Report a Crime

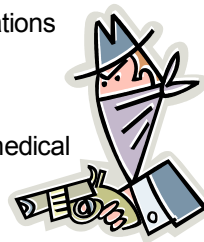
To report a crime in progress, a medical emergency, or a fire, call **9-1-1!**

Before you call, gather all the facts you can, and **if possible** write them down so that you will not forget them. Take a second look; a minute gathering more complete information may be worth the delay.

A license plate number is great, if you can see it. Do not put yourself at risk to obtain it. If the vehicle has a ladder on top or a dented left fender, providing that descriptive information is more useful than simply describing the vehicle as a "blue van." You want to be able to answer the usual who, what, where, when and how questions, or as many of these as you can.

Please report **ALL** suspicious incidents, even if minor in nature. Reports will be kept in our database for future reference. When calling in a crime or emergency, take your time and speak clearly and concisely.

We would never want to see a witness hurt, so please don't try to get involved if a crime occurs...



Trust Your Instincts

You **know** when something doesn't look right. You may not know why, but somehow it is out of character and arouses your suspicion. **Call it in!** We will investigate **all** calls for service.

Determining Priority

When you call to report an incident, the complaint officer will ask, "What is your emergency?" If you are reporting a fire, a medical emergency, or a crime in progress, the answer is "Yes." If you are simply reporting a "suspicious person" or a vehicle that seems to be cruising in the area and does not look right, the answer is "No." If your call is determined to be non-emergent in nature you will be directed to call a non-emergent line.



Stay on the Line

In an emergency the desk operator will ask you a number of questions which are necessary prior to sending a deputy. Be patient and provide whatever information is requested. The officer will dispatch the call to responding field units and continue to ask questions to update the units.

To Report a **Non-Emergency**: If you are in a Los Angeles County Park call (800) 834-0064.

If you are reporting a suspicious vehicle or person, or a vehicle was broken into and the suspects fled the area, you are in fact dealing with a crime that may be committed in the future or a crime that has already been committed.

These are not **Crimes in Progress**, do not call 9-1-1, Call (213) 974-8000, for these types of incidents.