

San Dimas Mountain Rescue Team Multi-Agency Training

Most rescues in the local mountains and urban areas involve multiple agencies working together in life-saving operations. Three consecutive days of joint training exercises culminated on Sunday, August 17th, as the [San Dimas Mountain Rescue Team](#) trained with a variety of local rescue workers to practice the critical skills necessary to safely work together in dangerous surroundings.

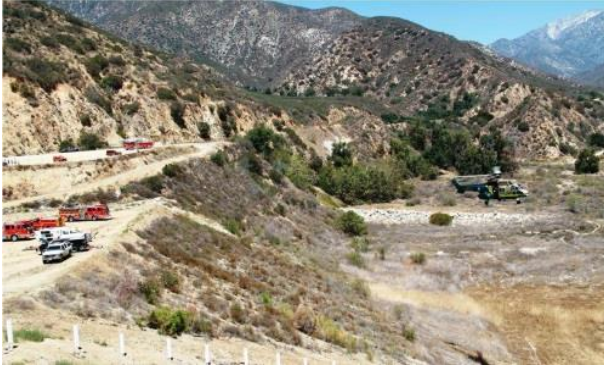
“Every rescue involves at least two agencies working together to save a life or prevent further injury,” said Captain Don Slawson, commander of the Los Angeles County Sheriff’s San Dimas station. For example, helicopter pilots from a police or fire agency often work with mountain rescue teams, or fire department paramedics might take over patient care from the mountain rescue team. Slawson said, “This type of training hones individual skills for the rescue workers, and provides critical inter-operability training so things go smoothly during a real emergency.”



A wide variety of agencies and units participated in multiple practice rescues over a three day period. The scenarios included participation by LASD’s Air Rescue 5 helicopter, Disaster Communications Services and the Sierra Madre Search and Rescue Team; San Bernardino Sheriff’s (SBSO) West Valley Search and Rescue Team; and the Los Angeles County Fire Department (LACF). Units from LACF included Battalion 2’s Engine 62, Engine 102, Quint 86, Squad 101, Copter 12, and the Battalion Chiefs. Over the three days, approximately 90 personnel from these various agencies participated in the training exercises.

Each training day involved an over-the-side scenario which involved multiple victims. LASD, LACF and SBSO resources worked together to locate, assess and rescue each victim. Some of the victims were extracted via rope systems, some via the San Dimas Mountain Rescue Team winch trucks, and others were hoisted out via LASD’s Air 5 and LACF’s Copter 12.





Dave Little, San Dimas Mountain Rescue Team Captain, said, “Exercises such as these provide a valuable training opportunity for the various units that work together on actual emergencies in our local mountains. Every detail is important, from radio communications and patient care protocols to rope line and equipment familiarity. We’re grateful for the effort and interagency cooperation that made this all happen.” The next set of training days will be this coming weekend from August 23rd to the 25th in the Bradbury area, and will involve the same LASD units along with LACF Battalion 16 and air resources.



The San Dimas Mountain Rescue Team, founded in 1955, responds primarily to rescue calls in the San Gabriel Mountains from the Duarte border to the Mt. Baldy area, and from Orange County north to Crystal Lake and portions of Angeles Crest Highway. The team also routinely responds to assist with rescues in other areas of Los Angeles County and other counties. In addition to a high volume of local rescue calls, the team recently responded to assist with rescues in San Diego, Riverside, Inyo, and Kern counties. Team functions include rescues of victims in vehicles “over the side” of roads, search and rescue of lost hikers or missing children, navigation, helicopter training, snow and ice rescue training, search and evacuation of brush fire areas, downed aircraft, and technical rescues in caves or other hard to reach places. The team also conducts preventative search and rescue training and presentations to children, youth and adults to help them from becoming victims.





A comprehensive training program of over two years trains each team member as an Emergency Medical Technician, Reserve Sheriff's Deputy, and development required for certification by the Mountain Rescue Association.



Part of the Los Angeles County Sheriff's Department, the San Dimas Mountain Rescue Team is one of eight all-volunteer Search and Rescue teams that function as specialized units of the Los Angeles Sheriff's Department. Though the Department furnishes facilities, some vehicles and life-saving equipment to perform core Search and Rescue functions, the Teams are mostly funded by donations and grants from generous donors and supporters. The [San Dimas Mountain Rescue Team](#) depends upon the support of donors to maintain equipment and operating funds for the all-volunteer emergency response team.

[ADDITIONAL PHOTOS HERE.](#)

San Dimas Mountain Rescue Team: <http://www.sdmrt.com/index.html>

SAN DIMAS STATION

San Dimas Sheriff's Station is one of six stations within the East Patrol Division of the Los Angeles County Sheriff's Department. The Station's jurisdiction encompasses approximately 276 square miles. In addition to serving the City of San Dimas, the station serves unincorporated communities of Azusa, Covina, Glendora, La Verne, Claremont, Pomona, the Los Angeles County portion of Mt. Baldy, a large portion of the Angeles National Forest (State Route 39), and portions of Angeles Crest Highway (Highway 2). The population for these areas is approximately one hundred and five thousand (105,000), nearly sixty six thousand (69,000) in the unincorporated areas and more than thirty-six thousand (36,000) in the City of San Dimas.

San Dimas Sheriff's Station
Los Angeles County Sheriff's Department
270 S. Walnut Avenue
San Dimas, CA 91773
(909) 450-2700

Nextdoor: <https://nextdoor.com/>
Twitter: <https://twitter.com/SDMLASD>
Facebook: <https://www.facebook.com/SanDimasSheriffsStation>
Website: <http://www.SanDimas.lasd.org>

LASD Text & Email (Register at <http://www.Nixle.com> :
<http://local.nixle.com/lasd---san-dimas-station-los-angeles-county-sheriff/>

And/or, in the [City of San Dimas, Code Red](#) <http://bit.ly/130HiGY>

LASD HEADQUARTERS:

Sheriff's Headquarters Bureau - Newsroom

Los Angeles County Sheriff's Department

323-267-4800

Email: SHBNewsroom@lasd.org

Website: <http://www.lasd.org>

Follow us at: Text and Emails, LASD HQ: <http://www.Nixle.com>

<http://nixle.com/lasd---hq-newsroom-shb-los-angeles-county-sheriff/>

Twitter: @LASDHQ <http://twitter.com/LASDHQ>

Twitter: @LASDTalk <https://twitter.com/LASDTalk>

Twitter: @LASDvideos <https://twitter.com/LASDvideos>

Twitter: @LASDespanol <https://twitter.com/LASDespanol>

Facebook LASD HQ: <http://www.facebook.com/LosAngelesCountySheriffsDepartment>

Instagram LASD Photos: <http://instagram.com/LASDHQ> Pinterest

LASD Photos : <http://pinterest.com/lacountysheriff/>

YouTube LASD Videos: <http://www.youtube.com/user/LACountySheriff/videos?view=0>

Alert LA County: Telephone emergency mass notification system

<http://www.lacounty.gov/wps/portal/alertla>

SNAP LA County: Specific Needs Disaster Voluntary Registry <http://snap.lacounty.gov/>

Text & Email, Register for LASD Nixle messages: To receive more detailed, up-to-date information via E-MAIL and/or TEXT directly from the Los Angeles County Sheriff's Department (LASD), sign up for "Nixle" alerts at <http://www.Nixle.com> and register for "LASD – Headquarters Newsroom (SHB), Los Angeles County Sheriff" AND your local LASD station area. Or, to receive URGENT TEXT ALERTS ONLY, text your zip code to 888777. Standard text messaging rates may apply depending on your calling plan.

"If You See Something, Say Something"

LA Crime Stoppers: Partner to prevent or report crime by contacting your local Sheriff's station. Or if you wish to remain Anonymous, call "LA Crime Stoppers" by dialing 800-222-TIPS (8477), texting the letters TIPLA plus your tip to CRIMES (274637), or using the website <http://lacrimestoppers.org>

John L. Scott, Sheriff

Los Angeles County Sheriff's Department