

FORENSIC ART



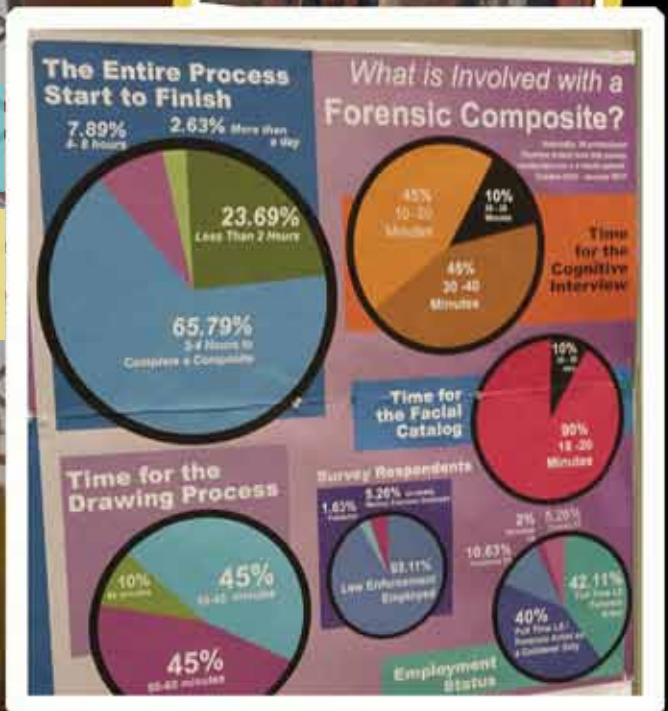
at the

American Academy of
Forensic Sciences

New Orleans, Louisiana

2017

Sandie Enslow, BA, Fellow
General Section, AAFS



Laissez les bons temps rouler!



Above:
On the street at
Mardi Gras

Right:
Tomm Mauriello
and Daniel Marion



Above:
A solitary statue in
Jackson Square,
French Quarter.



Below:
Rooftops,
early morning
in the
French Quarter.
Photos - Enslow



Congratulations

To

Lois Gibson

2017

for being accepted into the

General Section

of the

American Academy of

Forensic Sciences

Questions or interest
in the Academy contact

Lois Gibson

giblois@comcast.net

or

Sandie Enslow, BA, Fellow

Chair,

Regional Representative Committee,

General Section, AAFS

srenslow@lasd.org

aafs.org

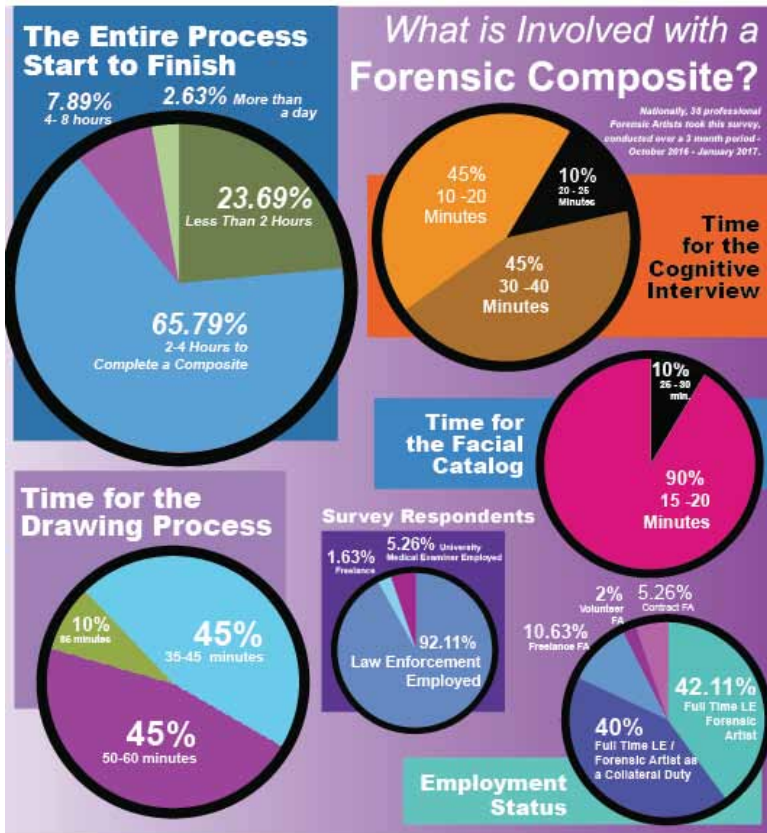
Thank You!

Nationally, 38 Forensic Art Professionals took this survey. I appreciate the time you took to take this. I know you are all very busy and most of you wear many hats in your job!

This survey focused on the main aspects of the Composite. The results were part of a poster presentation, displayed at the annual meeting of the American Academy of Forensic Sciences, held in New Orleans, LA in 2017.

This is the first of several surveys that are planned as research for our discipline. If you didn't get a chance to participate and would like to in the future, email me your contact info.

Sandie Enslow, LASD, srenslow@lasd.org



Survey Respondents (who responded)	92.11%Law Enforcement Employed
	5.26%Medical Examiner/University
	1.63%Freelance

Employment Status (how do you work?)	42.11%LE Employed as a Forensic Artist
	40.00%Full time LE - FA as a collateral duty
	10.63%Freelance
	5.26%Contract with an LE agency
	2.00%Volunteer

Entire Process (how long does it take?)	23.69%Less than 2 hours
	65.97%2 - 4 hours
	7.89%4 - 8 hours
	2.63%This process takes more than a day

Cognitive Interview (how long does it take?)	45.00%10 - 20 minutes
	10.00%20 - 25 minutes
	45.00%30 - 40 minutes

Facial Catalog (how long does it take?)	90.00%15-20 minutes
	10.00%25- 30 minutes

Drawing the actual image (how long does it take?)	45.00%35 - 45 minutes
	45.00%50 - 60 minutes
	10.11%86+ minutes

The Poster

3' h x 8' w

Besides the survey, this poster highlighted a unique case that I had back in 2011.

The rape victim had a broken jaw that was in pieces. She could barely talk. I asked her to draw the images of the suspects. From there I developed artwork that she modified.

The case didn't go anywhere, though we had drawings of the suspects. DNA didn't hit at all.

But in 2013, the suspects did another crime for which they were caught. The DNA taken connected to this earlier 2011 case. I testified in 2014.

This case was discussed in the **LINKEDIn Forensic Artist's Discussion Group**. This is a closed group for FAs who can discuss case work, issues, training opportunities and general FA news of the day.

If you are interested in the **LINKEDIn Forensic Artist's Discussion Group**, there's no cost to join. FAs across the country and internationally connect there. It is good to see what others are doing and how they approach their work. You don't need to join any group or organization (or for that matter be certified) to join this group. We ask that you be connected to a law enforcement, ME or University as a working Forensic Artist.

Our aim is to further work of FAs, advance the discipline and support you in the field.

FBI - The Hand-Drawn Composite - Old School Still Works With New Tech

Sheriff's Department
Los Angeles County
OLD SCHOOL
still works with NEW TECH

SUMMARY - Drawing composites is the simple "new" process. Builds the actual drawing of the image it may include a composite in their category book, with being and preparation for delivery to the district. Each interview is different, provided in the presentation and individuality involved. For the survey, the interview will follow as you suspect. It can be done, and will be done, with the same result. Not all drawings are provided under their legal jurisdiction.

The Girl with the Broken Jaw

In 2011, the victim was kidnapped, raped & beaten by the suspect Maxwell Adams. Sheriff's Department, LASD Forensic Artist met with her in the hospital emergency room in Carson, California. She gave me the photos & would have said - a traditional composite wasn't possible. The Forensic Artist asked the victim to draw the image of each suspect. The FBI had drawn a composite - they & I looked at the victim's drawings. These drawings didn't get any attention from the police. Not all the DNA, but I found a suspect in the database - www.lasd.net. In 2013, the suspect was arrested for a rape & murder. The suspect was arrested for a rape & murder. The suspect was arrested for a rape & murder.

The Entire Process Start to Finish

- 7.89% 4-8 hours
- 23.69% Less Than 2 hours
- 2.63% More Than 4 days
- 65.79% Composite & Composite

What is Involved with a Forensic Composite?

- 45% (10-30) Minutes
- 10% (30-40) Minutes
- 10% (15-20) Minutes
- 90% (15-20) Minutes

Time for the Facial Catalog

- 10.00% (10-15) Minutes
- 10.00% (15-20) Minutes
- 20% (20-30) Minutes
- 50.00% (30-40) Minutes

Survey Respondents

- 1.00% (1-2) Hours
- 8.25% (2-3) Hours
- 92.75% (3-4) Hours

Law Enforcement Employment

- 10.00% (10-15) Minutes
- 42.11% (15-20) Minutes
- 40% (20-30) Minutes

Employment Status

- 10.00% (10-15) Minutes
- 42.11% (15-20) Minutes
- 40% (20-30) Minutes

Time for the Drawing Process

- 10% (10-15) Minutes
- 45% (15-20) Minutes
- 45% (20-30) Minutes

MORELAND

- Victim's Drawing
- LASD Composite
- Moreland Booking Photo

ADAMS

- Victim's Drawing
- LASD Composite
- Adams Booking Photo



Promotions & Awards

This year in New Orleans, at the AAFS, I was promoted to the level of Fellow. It is my sixth year here at the Academy. I joined for my own personal growth and to represent my discipline on the national stage. I knew that this was where I needed to go. I have never had any regrets. The Academy was very welcoming and gave me the opportunity to work within the organization. No one discounted me as a Forensic Artist - **no one**. As a Forensic Artist with 23 + years working in Los Angeles County, a large region that is both urban and rural, I'm an experienced professional. I work hard in my field and take great pride in my work.

Forensic Art is in the General Section of the Academy - it is a great section! I was asked to chair the Regional Representative Committee, which I agreed to do. This group assists applicants applying for our section. They must have a recommendation from the General Section and if they don't know anyone, we assist with that.

2016 was my first year as Chair and I was recognized in New Orleans for the work I accomplished. I received the Kenneth S. Field Award of Appreciation for service to the AAFS staff this year. I was really honored.

As a Fellow, I will continue to work for FA. It is scientific, it is used and the discipline is growing. I'm optimistic for our future.

Sandie Enslow
srenslow@lasd.org

