



statistical information

00000024884 3 0000000000021110  
 00100000111 0 00000000010101000000000001111

000000000000000000000000000000211110

106720

78

0010000011111000000000000001010100000000000111

001000

STATISTICAL INFORMATION



YEAR IN REVIEW • 1998



The Year in Review 1998 Statistical Summary is issued by the Los Angeles County Sheriff's Department as a means of evaluating the effectiveness of current procedures and as a reference for future development of the Department. The following is a clarification of the terms used in the summary.

Totals may vary from previously published figures. This is due to the continual updating of Event Index System records and the efforts to present the most current data.

### ***Crime Rates***

Crime rates in this summary are based on a population of 10,000 rather than 100,000 as in the State of California and Federal Bureau of Investigation reports. This makes the rates more significant in view of the population distribution in the various station and contract city areas. The crime rate is calculated as follows:

$$\frac{\text{Number of Crimes in Area}}{\text{Population in Area}} \times 10,000 = \text{Crime Rate}$$

### ***Comparisons***

Factors contributing to crime are numerous and vary from place to place. Readers are cautioned against drawing conclusions from direct comparisons of crime figures between individual communities of similar populations and size. In Los Angeles County, a jurisdiction in excess of eight million population, several factors affect the rate of crime. The factors include:

- Crime reporting practices of citizens
- Solid economic factors
- Demographics of the population, including age, sex, race, and ethnicity
- Population density and community characteristics: commercial, educational, recreational, and economic
- Public attitude toward crime and law enforcement
- Number of police employees per unit of population
- Policies of prosecuting officials and courts

In evaluating percentage changes, consideration must be given to the dates during which changes took place as well as the actual number of crimes upon which the percentage is based.

### ***Population***

Unincorporated area population figures were obtained from the 1998 Census Demographic Report published by the Claritas Corporation, Ithaca, New York. Contact City population figures were obtained from the January 1998 Department of Finance figures.

### ***Area***

The area adjustments are made from the data provided by the Los Angeles County Local Agency Formation Commission.

### ***Part I Offenses***

The Part I Offenses are used by law enforcement agencies in the United States to reveal the extent and trend of criminal activity. Any significant change from the anticipated pattern of the figures alerts law enforcement administrators to possible problem areas. The Part I Offenses are Criminal Homicide, Forcible Rape, Robbery, Aggravated Assault, Burglary, Larceny Theft, Grand Theft Auto, and Arson.

The Sheriff's Department tabulates Part I Offenses by Uniform Crime Report standards and maintains statistical files with regard to violations, locations of occurrences, arrests by age and sex of the offenders, and by disposition of incidents (cases). Only the most serious classification is tabulated from reports with multiple classifications. For example, if a suspect is charged with Burglary and Vandalism, only the Burglary (the most serious crime) is included in the statistics. However, if several persons together commit one crime, each person is counted in "Adults Arrested" but only one crime is counted in "Reported Incidents." Thus, statistics maintained by each of the stations or bureaus may differ from those recorded in this summary.

Additionally, for the crimes of Homicide, Forcible Rape, and Aggravated Assault, the "Reported Incidents" column actually refers to the number of victims as opposed to the number of incidents. This procedure is in compliance with the Bureau of Criminal Statistics' Uniform Crime Reporting (UCR) guidelines.

### ***Percentage Comparisons***

Whenever the availability of data permits, percentage changes are indicated. These percentages reflect increases or decreases in the total number of incidents. It must be noted that these changes do not adequately reflect changes in manpower expended. It is, in fact, possible for a decrease in incidents to represent an increase in man-hours expended.

### ***Traffic Statistics***

The figures obtained from Traffic Services Detail were based on data submitted by each station.

### ***Stolen and Recovered Property***

The monetary value of property stolen and recovered has been changed to the type of property stolen instead of property loss by crime classification.

# 1998 CHANGES AFFECTING LASD STATISTICS

EFFECTIVE DATE	CHANGE OR MODIFICATION	REASON FOR CHANGE / MODIFICATION
1/1/98	<p><b>PALMDALE</b> 2601, 2602, 2603, 2604, 2607, 2608, 2609, 2610, 2611, 2612, 2613, 2616, 2617, 2618, 2619, 2620, 2621, 2622, 2623, 2624, 2625, 2626, 2627</p> <p><b>UNINCORPORATED</b> 2632, 2633, 2634, 2635, 2636, 2637, 2638, 2639, 2640</p> <p><b>UNINCORPORATED (AGUA DULCE)</b> 2644, 2645</p> <p><b>UNINCORPORATED (ACTON)</b> 2646, 2647, 2648</p> <p><b>UNINCORPORATED (ALPINE SPRINGS)</b> 2649, 2650</p> <p><b>UNINCORP (LEONA VALLEY / BOUQUET CANYON / GREEN VALLEY / LAKE HUGHES)</b> 2653, 2654, 2655, 2656, 2657</p> <p><b>UNINCORP (LITTLE ROCK / PEARBLOSSOM)</b> 2660, 2661, 2662, 2663, 2664, 2665, 2666, 2667</p> <p><b>UNINCORP (LLANO / BLACK BUTTE)</b> 2668, 2669, 2670</p> <p><b>UNINCORP (ANGELES NATIONAL FOREST)</b> 2673, 2674, 2675, 2676, 2677, 2678, 2679, 2680, 2681</p> <p><b>UNINCORP (AQUADUCT)</b> 2685</p> <p><i>(continued on next page)</i></p>	<p>Due to the creation of Palmdale station, new reporting districts and arresting agency codes have been created.</p>

*(continued on next page)*

# 1998 CHANGES AFFECTING LASD STATISTICS (CONTINUED)

EFFECTIVE DATE	CHANGE OR MODIFICATION	REASON FOR CHANGE / MODIFICATION
	<p><b>Arresting Agency codes:</b>  <i>Palmdale Patrol :2601</i>  <i>Palmdale Detectives :2602</i>  <i>Palmdale Narcotics :2603</i></p>	
2/5/98	<p><i>Reporting District 2656 and 2657 were created to replace existing Reporting District 1119 and 1188.</i></p>	<p>Palmdale station requested to create new Reporting Districts to replace existing Lancaster Reporting Districts.</p>
2/24/98	<p><i>The following Reporting Districts were created in Avalon and Temple station:</i></p> <p><b>Avalon Station</b>  <i>New Reporting Districts: 1816, 1817, 1818</i>  <i>Reporting District 1875 has been inactivated</i></p> <p><b>Temple Station</b>  <i>New Reporting Districts: 0535, 0536, 0563, 0575</i>  <i>New Patrol Area was created: Patrol Area #12</i></p>	<p>The City of Avalon annexed Pebley Beach Area and Avalon Canyon Area. Former Reporting District 1875 was inactivated since the Reporting District boundary has been changed.</p>
2/24/98	<p><i>The following Reporting Districts were inactivated.</i></p> <p><b>Lancaster Station:</b>            1168, 1169, 1173, 1179</p>	<p>Since the creation of Palmdale Station, listed Reporting Districts were reassigned from Lancaster Station to Palmdale station.</p>
4/9/98	<p><i>New penal codes have been added to the Charge Table.</i>            593(d)(2)(A), 593(d)(2)(B)</p>	<p>Updating Charge Table with missing charge codes.</p>
6/1/98	<p><i>Created a new Active Cases Status Report listing cases active over 30 days but no more than 60 days.</i></p>	<p>Per request from SCIF meeting, a new report has been created to assist identifying and controlling active cases over 60 days.</p>
6/8/98	<p><i>New assignment code and Reporting Districts were created.</i></p> <p><b>Technical Services Division, Adm.:</b>            2031(A/C), 2031(RD)</p> <p><b>Management Information Services:</b>            2032(A/C), 2032(RD)</p>	<p>Created a new Reporting District and Assignment Code to identify newly created division.</p>

(continued on next page)

# 1998 CHANGES AFFECTING LASD STATISTICS (Continued)

EFFECTIVE DATE	CHANGE OR MODIFICATION	REASON FOR CHANGE / MODIFICATION
6/10/98	<p><i>Inactivated existing Reporting Districts in Lennox Station:</i>  <b>Inactivated Reporting Districts:</b> 0386, 0387, 0389</p>	<p>Unincorporated Gardena area has been annexed by the City of Gardena.</p>
6/15/98	<p><i>Created a new Statistical Code.</i>  <b>Inmate Injury / Feigned Attempt Suicide:</b> 458</p>	<p>Per request from Captain John E. Anderson from Twin Towers, a new Statistical Code has been created to capture the incidents wherein an inmate self-inflicts injury for purposes other than attempt suicide.</p>
8/1/98	<p><i>Created a new Arresting Agency code for the Crime Lab at Lancaster station.</i>  <b>Arresting Agency code:</b> 3901</p>	<p>Per request from Lancaster Station, new arresting agency code has been created to capture the activities at the Lancaster Crime Laboratory.</p>
12/31/98	<p><i>Created a new Reporting District.</i>  <b>Lomita station:</b> RD1714</p>	<p>Per request from Lomita Station, a new reporting district has been created to capture the crime statistics on Pacific Coast Highway.</p>
12/31/98	<p><i>Reactivated a Reporting District.</i>  <b>Lancaster station:</b> RD1166 and inactivated RD2641 at Palmdale Station.</p>	<p>Per request from Lancaster Station, a old reporting district has been reactivated to capture the crimes in the south end of Quarts Hill area patrolled by Lancaster Station.</p>
12/31/98	<p><i>Created a new Statistical Code:</i>  <b>Hate Crime (Gender):</b> 526</p>	<p>Since the passage of Assembly Bill 1999, Captain Dennis D. Wilson, Advanced Training Bureau, requested to create a new statistical code to capture the crime statistics for Hate Crime against gender.</p>





department summary



# DEPARTMENT SUMMARY



Y E A R I N R E V I E W • 1 9 9 8

# DEPARTMENTAL PERSONNEL STRENGTH

(As of December 31, 1998)

RANK	TOTAL	MALE	FEMALE	WHITE	BLACK	HISPANIC	AMERICAN INDIAN	ASIAN	FILIPINO	OTHER
SHERIFF	1	1	0	0	0	1	0	0	0	0
UNDERSHERIFF	1	1	0	1	0	0	0	0	0	0
ASSISTANT SHERIFF	2	2	0	2	0	0	0	0	0	0
DIVISION CHIEF	7	5	2	5	2	0	0	0	0	0
COMMANDER	18	17	1	15	1	1	0	1	0	0
CAPTAIN	53	48	5	42	4	7	0	0	0	0
LIEUTENANT	293	265	28	230	27	29	0	6	1	0
SERGEANT	939	832	107	724	57	137	0	20	1	0
DEPUTY IV	38	38	0	27	5	6	0	0	0	0
DEPUTY	6,736	5,746	990	3,993	735	1,720	6	229	53	0
<b>TOTAL SWORN</b>	<b>8,088</b>	<b>6,955</b>	<b>1,133</b>	<b>5,039</b>	<b>831</b>	<b>1,901</b>	<b>6</b>	<b>256</b>	<b>55</b>	<b>0</b>
<b>PERCENTAGE</b>		<b>86%</b>	<b>14%</b>	<b>62.31%</b>	<b>10.3%</b>	<b>23.51%</b>	<b>.08%</b>	<b>3.1%</b>	<b>.7%</b>	
DEPUTY SHERIFF TRAINEE	88	72	16	36	7	40	0	2	3	0
CIVILIAN	5,298	2,065	3,233	1,542	1,430	1,465	7	372	482	0
<b>TOTAL CIVILIAN</b>	<b>5,386</b>	<b>2,137</b>	<b>3,249</b>	<b>1,578</b>	<b>1,437</b>	<b>1,505</b>	<b>7</b>	<b>374</b>	<b>485</b>	<b>0</b>
<b>PERCENTAGE</b>		<b>39.68%</b>	<b>60.32%</b>	<b>29.3%</b>	<b>26.69%</b>	<b>27.92%</b>	<b>.13%</b>	<b>6.95%</b>	<b>9.01%</b>	

# BUDGETED POSITIONS FOR THE DEPARTMENT\*

TOTAL AUTHORIZED	EXECUTIVE OFFICE OF THE SHERIFF	OFFICE OF ADMINISTRATIVE SERVICES	COURT SERVICES DIVISION	CUSTODY DIVISION	DETECTIVE DIVISION	FIELD OPERATIONS REGION I	FIELD OPERATIONS REGION II	FIELD OPERATIONS REGION III	PROFESSIONAL STANDARDS AND TRAINING DIVISION	TECHNICAL SERVICES DIVISION	GENERAL SUPPORT DIVISION	
SHERIFF (UNCLASSIFIED)	1	1										
UNDERSHERIFF (UNCLASSIFIED)	1	1										
ASSISTANT SHERIFF	2	2										
DIVISION CHIEF	8	0	0	1	1	1	1	1	1	1		
EXECUTIVE ASSISTANT (UNCLASSIFIED)	0	0										
AREA COMMANDER	18	1	1	2	4	1	2	2	2	2	1	
CAPTAIN	51	3	1	4	9	6	8	6	6	4	4	
LIEUTENANT	298	14	1	18	64	29	53	40	40	24	14	1
SERGEANT	998	29	2	73	189	112	178	149	162	83	20	1
DEPUTY SHERIFF GENERALIST	7,309.0	58	8	1,380	2,115.8	353	1,209.5	951	1018.6	133.5	35	46.6
<b>TOTAL SWORN</b>	<b>8,686.0</b>	<b>109</b>	<b>13</b>	<b>1,478</b>	<b>2,382.8</b>	<b>502</b>	<b>1,451.5</b>	<b>1,149</b>	<b>1229.6</b>	<b>247.5</b>	<b>75</b>	<b>48.6</b>
DEPUTY SHERIFF TRAINEE	105									105		
CIVILIAN	5,721.4	76	631.5	385	2,510.0	146	352.5	228.6	304.8	330	699.5	57.5
<b>TOTAL CIVILIAN</b>	<b>5,826.4</b>	<b>76</b>	<b>631.5</b>	<b>385</b>	<b>2,510.0</b>	<b>146</b>	<b>352.5</b>	<b>228.6</b>	<b>304.8</b>	<b>435</b>	<b>699.5</b>	<b>57.5</b>
<b>TOTAL DEPARTMENT</b>	<b>14,512.4</b>	<b>185</b>	<b>644.5</b>	<b>1,863</b>	<b>4,892.8</b>	<b>648</b>	<b>1,804.0</b>	<b>1,377.6</b>	<b>1,534.4</b>	<b>682.5</b>	<b>774.5</b>	<b>106.1</b>

\* Budgeted Positions for Fiscal Year 1998-1999  
(student workers and student professional workers are excluded)

# 1998 PART I CRIMES

**One Homicide every 33 hours**



**One Larceny Theft every 26 minutes**

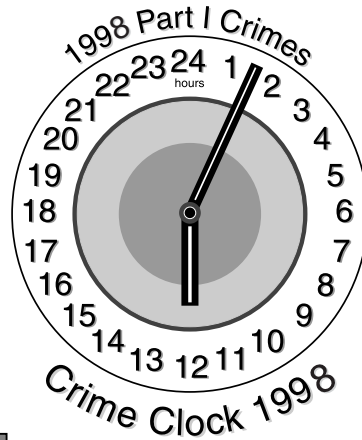


**One Forcible Rape every 14 hours**



**One Grand Theft Auto every 60 minutes.**

**One Arson every 10 hours**



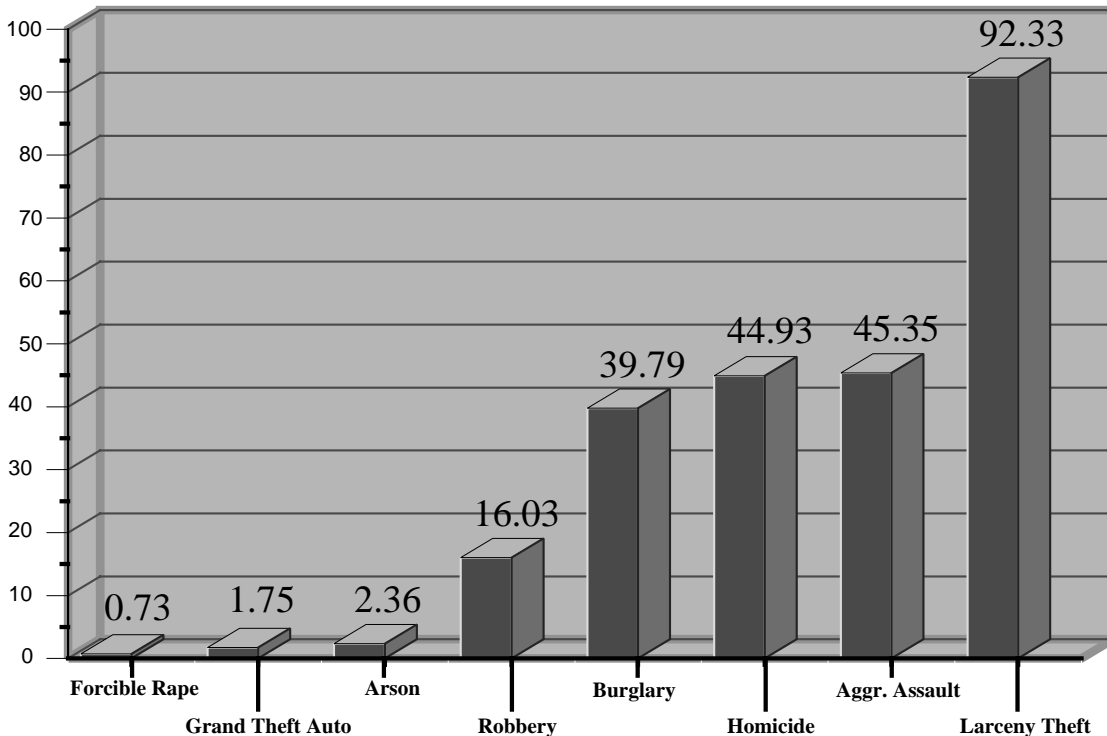
**One Burglary every 53 minutes**

**One Robbery every 75 minutes**



**One Aggravated Assault every 53 minutes**

## CRIMES COMMITTED EVERY TWENTY-FOUR HOURS



# DEPARTMENT TOTAL

## Synopsis

	CALENDAR YEAR 1997	CALENDAR YEAR 1998	PERCENT CHANGE	CRIME RATE PER 10,000 POPULATION	
				1997	1998
<b>TOTAL REPORTED INCIDENTS</b>	<b>324,005</b>	<b>321,930</b>	<b>-1</b>		
<b>PART I CRIMES</b>	<b>98,572</b>	<b>88,792</b>	<b>-10</b>	<b>372.22</b>	<b>433.82</b>
<i>CRIMINAL HOMICIDE</i>	289	266	-8	1.09	1.30
<i>FORCIBLE RAPE</i>	630	637	1	2.38	3.11
<i>ROBBERY</i>	6,978	5,852	-16	26.35	28.59
<i>AGGRAVATED ASSAULT</i>	18,222	16,551	-9	68.81	80.87
<i>BURGLARY</i>	18,621	16,399	-12	70.32	80.12
<i>LARCENY THEFT</i>	35,038	33,700	-4	132.31	164.65
<i>GRAND THEFT AUTO</i>	17,885	14,524	-19	67.54	70.96
<i>ARSON</i>	909	863	-5	3.43	4.22
<b>PART II CRIMES</b>	<b>115,366</b>	<b>118,115</b>	<b>2</b>	<b>435.64</b>	<b>577.09</b>
<b>NONCRIMINAL</b>	<b>110,067</b>	<b>115,023</b>	<b>5</b>		
<b>TOTAL ARRESTS*</b>	<b>98,706</b>	<b>98,782</b>	<b>0</b>		
<i>ADULT ARRESTS</i>	86,340	86,244	0		
<i>JUVENILE ARRESTS</i>	12,366	12,538	1		
<b>STOLEN AND RECOVERED PROPERTY</b>					
<i>AMOUNT STOLEN</i>	\$219,580,537	\$181,676,696	-17		
<i>AMOUNT RECOVERED</i>	\$82,296,882	\$67,177,322	-18		
<i>PERCENT RECOVERED</i>	37.5	37.0			
				CRIME RATE PER 10,000 POPULATION	
	**AREA IN SQUARE MILES	**POPULATION 1998		PART I OFFENSES 1997	PERCENT CHANGE 1998
<b>TOTAL AREA</b>	<b>3,161.54</b>	<b>2,046,740</b>		<b>372.22</b>	<b>433.82</b> <b>17%</b>
<i>UNINCORPORATED AREA</i>	2,663.48	1,050,470		311.94	85.05
<i>CONTRACT CITIES</i>	498.06	996,270		400.56	0.00
					-73%
					-100%

\*Department total exceeds the sum of station totals by the number of arrests made outside of Sheriff's jurisdiction.

\*\* Refer to page 247 for Transit Service Bureau area in travel miles and ridership stats.

# SYNOPSIS – DEMOGRAPHIC AND GEOGRAPHIC DATA

	AREA POPULATION 1998		TOTAL POPULATION DENSITY PER SQ. MILE		PART I CRIME RATE PER 10,000 POPULATION		PERSONNEL COMPLEMENT	
	INCORP.	UNINCORP.	SQ. MILES IN STATION AREA	PER SQ. MILE	PER 10,000 POPULATION	SWORN	NON-SWORN	
<b>DEPARTMENT TOTAL</b>								
<b>REGION I</b>								
CRESCENTA VALLEY REGIONAL								
EAST LOS ANGELES								
LANCASTER								
LOST HILLS REGIONAL								
PALMDALE								
SANTA CLARITA VALLEY								
TEMPLE								
<b>REGION II</b>								
CARSON	68,500	122,600	13.49	14,166.05	425.17	326.00	49.00	
CENTURY	30,600	86,000	8.03	14,520.55	400.00	**298.2	**47.0	
LENNOX	0	27,500	7.80	3,525.64	429.45	-----	-----	
MARINA DEL REY	76,250	4,800	22.75	3,562.64	203.70	93.00	27.60	
LOMITA	38,600	1,200	3.13	12,715.65	709.80	138.00	42.00	
<b>REGION III</b>	<b>690,420</b>	<b>335,220</b>	<b>533.93</b>	<b>1,920.93</b>	<b>328.55</b>	<b>1,048.60</b>	<b>267.50</b>	
AVALON	3,570	620	131.24	31.93	632.46	10.00	9.00	
INDUSTRY	49,300	133,900	64.94	2,821.07	317.03	219.20	49.00	
LAKEWOOD	293,250	1,850	32.52	9,074.42	468.72	286.00	78.00	
NORWALK	152,300	62,900	32.03	6,718.70	282.06	212.20	50.00	
PICO RIVERA	63,900	30,200	13.04	7,216.26	310.84	87.00	24.00	
WALNUT REGIONAL	128,100	105,750	260.16	898.87	205.13	234.20	57.50	

\* Includes all Department Personnel, in addition to Field Operations

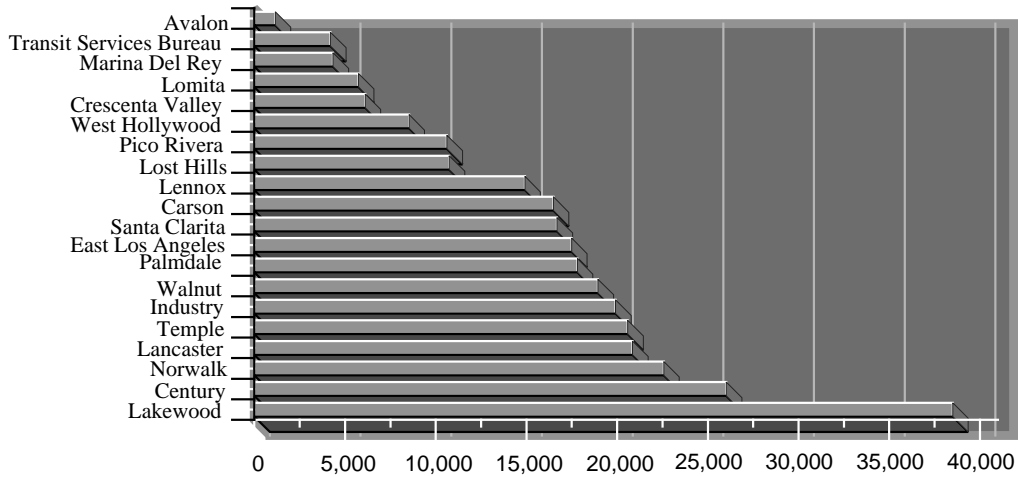
\*\* Includes Marina Del Rey Station

# COMPARATIVE CRIME RATES BY STATION AND CITIES

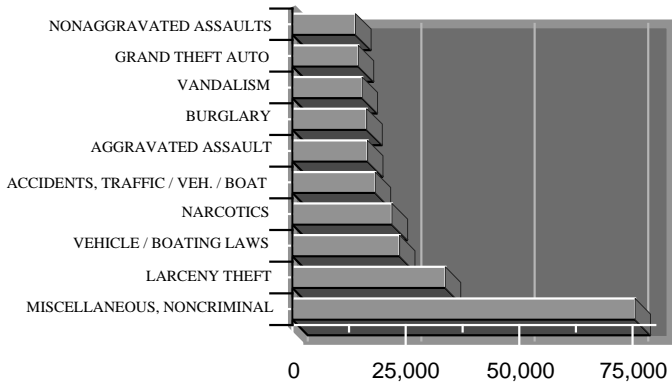
FOR I		CASES	PART I RATE	FOR II		CASES	PART I RATE	FOR III		CASES	PART I RATE
<b>CRESCENTA REGIONAL</b>		<b>6,112</b>	<b>202.07</b>	<b>CARSON</b>		<b>16,482</b>	<b>396.45</b>	<b>AVALON</b>		<b>1,153</b>	<b>632.46</b>
La Canada / Flintridge Unincorporated Area		1,298 4,814	175.54 210.45	Carson Unincorporated Area		12,173 4,309	390.75 410.33	Avalon Unincorporated Area		1,072 81	691.88 290.32
<b>EAST LOS ANGELES</b>		<b>17,490</b>	<b>295.76</b>	<b>CENTURY</b>		<b>26,019</b>	<b>425.17</b>	<b>INDUSTRY</b>		<b>19,914</b>	<b>317.03</b>
Commerce Cudahy Unincorporated Area		3,730 2,211 11,549	991.70 260.36 237.13	Lynwood Unincorporated Area		9,179 16,840	407.15 435.24	Industry La Habra Heights La Puente Unincorporated Area		4,980 356 4,899 9,679	25,400.00 119.12 276.56 208.59
<b>LANCASTER</b>		<b>20,851</b>	<b>328.04</b>	<b>LENNOX</b>		<b>14,910</b>	<b>400.00</b>	<b>LAKEWOOD</b>		<b>38,504</b>	<b>468.72</b>
Lancaster Unincorporated Area		17,972 2,879	418.37 132.17	Lawndale Unincorporated Area		4,059 10,851	424.51 391.28	Artesia Bellflower Cerritos Hawaiian Gardens Lakewood Paramount Unincorporated Area		1,996 9,465 7,705 2,133 8,533 8,593 79	411.18 452.96 548.00 380.73 399.75 556.61 151.35
<b>LOST HILLS REGIONAL</b>		<b>10,740</b>	<b>171.88</b>	<b>MARINA DEL REY</b>		<b>3,856</b>	<b>429.45</b>	<b>NORWALK</b>		<b>22,570</b>	<b>282.06</b>
Agoura Hills Calabasas Hidden Hills Malibu WestLake Village Unincorporated Area		1,730 1,811 72 4,999 659 1,469	184.02 166.17 87.80 298.07 244.71 104.24	Rolling Hills Rolling Hills Estates Unincorporated Area		59 718 607	68.29 243.68 372.92	La Mirada Norwalk Unincorporated Area		5,020 12,566 4,984	239.55 346.96 208.27
<b>PALMDALE</b>		<b>17,808</b>	<b>382.83</b>	<b>LOMITA</b>		<b>5,737</b>	<b>203.70</b>	<b>PICO RIVERA</b>		<b>10,615</b>	<b>310.84</b>
Palmdale Unincorporated Area		14,556 3,252	404.58 310.28	Lomita Rancho Palos Verdes Rolling Hills Rolling Hills Estates Unincorporated Area		2,414 1,939 59 718 607	305.24 135.96 68.29 243.68 372.92	Pico Rivera Unincorporated Area		7,841 2,774	328.95 272.52
<b>SANTA CLARITA VALLEY</b>		<b>16,686</b>	<b>202.78</b>	<b>WEST HOLLYWOOD</b>		<b>8,527</b>	<b>709.80</b>	<b>WALNUT REGIONAL</b>		<b>18,941</b>	<b>205.13</b>
Santa Clarita Unincorporated Area		13,184 3,502	200.07 211.83	West Hollywood Unincorporated Area		7,066 1,461	583.68 4,766.67	Diamond Bar San Dimas Walnut Unincorporated Area		4,401 3,281 2,394 8,865	190.74 238.43 185.69 207.47
<b>TEMPLE</b>		<b>20,582</b>	<b>251.66</b>	<b>SUMMARY</b>				<b>MISCELLANEOUS</b>		<b>94,490</b>	<b>NC</b>
Bradbury Duarte Rosemead South El Monte Temple City Unincorporated Area		26 2,589 6,340 4,577 2,647 4,403	105.26 239.74 326.81 348.44 186.03 182.39	<b>TOTAL DEPARTMENT</b>		<b>321,930</b>	<b>519.32</b>	<b>TRANSIT SERVICES BUREAU</b>		<b>4,194</b>	<b>NC</b>

# DEPARTMENT TOTAL

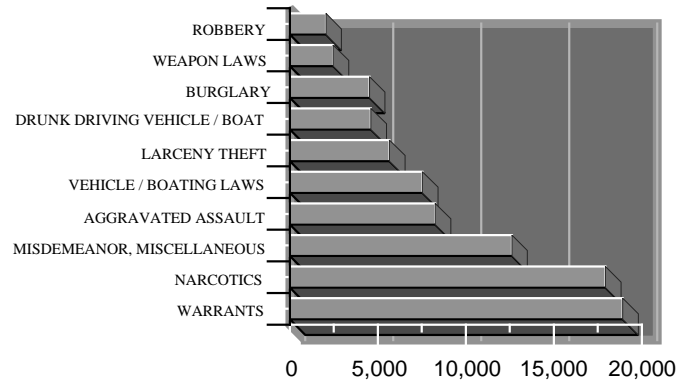
Cases Handled By Location



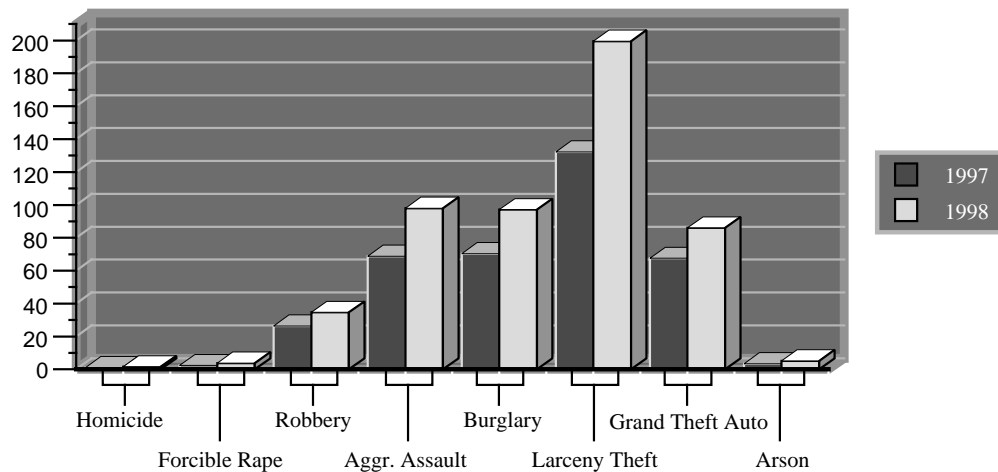
Ten Most Frequent Offenses Handled



Ten Most Frequent Arrests



Crime Rate per 10,000 Population





# DEPARTMENT TOTAL

## Incidents and Arrests

	REPORTED INCIDENTS	ADULTS ARRESTED	JUVENILES ARRESTED	TOTAL ARRESTED
<b>CALENDAR YEAR 1998</b>	<b>321,930</b>	<b>86,244</b>	<b>12,538</b>	<b>98,782</b>
CALENDAR YEAR 1997	324,005	86,340	12,366	98,706
<b>% CHANGE 1997 TO 1998</b>	<b>-1</b>	<b>0</b>	<b>1</b>	<b>0</b>
<b>PART I CRIMES</b>				
CRIMINAL HOMICIDE*	266	162	29	191
FORCIBLE RAPE*	637	158	17	175
ROBBERY	5,852	1,472	584	2,056
AGGRAVATED ASSAULT*	16,551	7,292	970	8,262
BURGLARY	16,399	3,003	1,513	4,516
LARCENY THEFT	33,700	4,111	1,549	5,660
GRAND THEFT AUTO	14,524	1,279	631	1,910
ARSON	863	52	54	106
<b>SUBTOTAL</b>	<b>88,792</b>	<b>17,529</b>	<b>5,347</b>	<b>22,876</b>
<b>PART II CRIMES</b>				
FORGERY	3,503	930	53	983
FRAUD AND NSF CHECKS	1,527	284	18	302
SEX OFFENSES, FELONIES	1,158	555	76	631
SEX OFFENSES, MISDEMEANORS	1,375	655	19	674
NONAGGRAVATED ASSAULTS	13,918	1,345	311	1,656
WEAPON LAWS	3,233	1,853	603	2,456
OFFENSES AGAINST FAMILY	188	83	1	84
NARCOTICS	21,935	16,468	1,443	17,911
LIQUOR LAWS	3,683	317	156	473
DRUNK / ALCOHOL / DRUGS	1,757	1,726	84	1,810
DISORDERLY CONDUCT	4,960	318	210	528
VAGRANCY	373	57	4	61
GAMBLING	47	56	4	60
DRUNK DRIVING VEHICLE / BOAT	4,120	4,557	46	4,603
VEHICLE / BOATING LAWS	23,426	7,157	369	7,526
VANDALISM	15,339	400	481	881
WARRANTS	734	18,768	85	18,853
RECEIVING STOLEN PROPERTY	642	1,276	342	1,618
FEDERAL OFFENSES W/O MONEY	112	49	11	60
FEDERAL OFFENSES WITH MONEY	739	2	0	2
FELONIES, MISCELLANEOUS	5,275	1,649	282	1,931
MISDEMEANOR, MISCELLANEOUS	10,071	10,091	1,621	11,712
<b>SUBTOTAL</b>	<b>118,115</b>	<b>68,596</b>	<b>6,219</b>	<b>74,815</b>
<b>NONCRIMINAL</b>				
PERSONS MISSING	9,118	0	10	10
JUVENILE, NONCRIMINAL	1,837	0	877	877
COMMITMENTS	47	0	0	0
MISCELLANEOUS, NONCRIMINAL	75,449	116	84	200
SUICIDE AND ATTEMPT	1,460	0	0	0
MENTALLY ILL	1,284	3	1	4
ACCIDENTS, TRAFFIC / VEH. / BOAT	18,249	0	0	0
ACCIDENTS, MISCELLANEOUS	6,392	0	0	0
PERSONS DEAD	1,187	0	0	0
<b>SUBTOTAL</b>	<b>115,023</b>	<b>119</b>	<b>972</b>	<b>1,091</b>

\* Homicide, Forcible Rapes, and Aggravated Assaults are counted by number of victims.

NOTE: Figures include Detective Division and Jail Investigations Unit.

# DEPARTMENT TOTAL

PART I ACTUAL OFFENSES CLEARED					
	DEPARTMENT TOTAL	MISCELLANEOUS LOCATIONS	REGION I	REGION II	REGION III
<b>TOTAL PART I ACTUAL OFFENSES</b>	<b>88,792</b>	<b>1,405</b>	<b>30,104</b>	<b>23,586</b>	<b>33,697</b>
<i>NUMBER UNFOUNDED</i>	411	0	211	116	84
<i>NUMBER CLEARED</i>	26,400	766	10,044	6,642	8,948
<i>PERCENT CLEARED</i>	30	55	34	28	27
<b>CRIMINAL HOMICIDE</b>	<b>266</b>	<b>3</b>	<b>78</b>	<b>109</b>	<b>76</b>
<i>NUMBER UNFOUNDED</i>	10	0	2	4	4
<i>NUMBER CLEARED</i>	164	3	55	48	58
<i>PERCENT CLEARED</i>	64	100	72	46	81
<b>FORCIBLE RAPE</b>	<b>637</b>	<b>2</b>	<b>254</b>	<b>185</b>	<b>196</b>
<i>NUMBER UNFOUNDED</i>	11	0	2	2	7
<i>NUMBER CLEARED</i>	419	1	176	100	142
<i>PERCENT CLEARED</i>	67	50	70	55	75
<b>ROBBERY</b>	<b>5,852</b>	<b>38</b>	<b>1,689</b>	<b>2,092</b>	<b>2,033</b>
<i>NUMBER UNFOUNDED</i>	21	0	8	6	7
<i>NUMBER CLEARED</i>	1,804	15	581	618	590
<i>PERCENT CLEARED</i>	31	39	35	30	29
<b>AGGRAVATED ASSAULT</b>	<b>16,551</b>	<b>1,081</b>	<b>5,687</b>	<b>4,699</b>	<b>5,084</b>
<i>NUMBER UNFOUNDED</i>	85	0	40	29	16
<i>NUMBER CLEARED</i>	12,604	688	4,636	3,292	3,988
<i>PERCENT CLEARED</i>	77	64	82	70	79
<b>BURGLARY</b>	<b>16,399</b>	<b>15</b>	<b>6,165</b>	<b>4,409</b>	<b>5,810</b>
<i>NUMBER UNFOUNDED</i>	72	0	42	19	11
<i>NUMBER CLEARED</i>	2,574	2	1,123	657	792
<i>PERCENT CLEARED</i>	16	13	18	15	14
<b>LARCENY THEFT</b>	<b>33,700</b>	<b>99</b>	<b>11,795</b>	<b>7,947</b>	<b>13,859</b>
<i>NUMBER UNFOUNDED</i>	122	0	53	39	30
<i>NUMBER CLEARED</i>	7,274	10	2,836	1,540	2,888
<i>PERCENT CLEARED</i>	22	10	24	19	21
<b>GRAND THEFT AUTO</b>	<b>14,524</b>	<b>158</b>	<b>4,114</b>	<b>3,878</b>	<b>6,374</b>
<i>NUMBER UNFOUNDED</i>	83	0	61	13	9
<i>NUMBER CLEARED</i>	1,454	46	583	365	460
<i>PERCENT CLEARED</i>	10	29	14	9	7
<b>ARSON</b>	<b>863</b>	<b>9</b>	<b>322</b>	<b>267</b>	<b>265</b>
<i>NUMBER UNFOUNDED</i>	7	0	3	4	0
<i>NUMBER CLEARED</i>	107	1	54	22	30
<i>PERCENT CLEARED</i>	13	11	17	8	11

# DEPARTMENT TOTAL

PART I ACTUAL OFFENSES CLEARED			
	ACTUAL KNOWN OFFENSES	NUMBER CLEARED	PERCENT CLEARED
<b>TOTAL PART I ACTUAL OFFENSES</b>	<b>88,381</b>	<b>26,400</b>	<b>30%</b>
<i>CRIMINAL HOMICIDE</i>	256	164	64%
<i>FORCIBLE RAPE</i>	626	419	67%
<i>ROBBERY</i>	5,831	1,804	31%
<i>AGGRAVATED ASSAULT</i>	16,466	12,604	77%
<i>BURGLARY</i>	16,327	2,574	16%
<i>LARCENY THEFT</i>	33,578	7,274	22%
<i>GRAND THEFT AUTO</i>	14,441	1,454	10%
<i>ARSON</i>	856	107	13%

PROPERTY BY TYPE AND VALUE			
	VALUE STOLEN	VALUE RECOVERED	PERCENT
<b>TOTAL</b>	<b>\$181,676,696</b>	<b>\$67,177,322</b>	<b>37%</b>
<i>CURRENCY, NOTES, ETC.</i>	\$15,175,255	\$414,622	3%
<i>JEWELRY AND PRECIOUS METALS</i>	\$17,631,225	\$511,082	3%
<i>CLOTHING AND FURS</i>	\$3,935,813	\$393,099	10%
<i>LOCALLY STOLEN MOTOR VEHICLES</i>	\$89,026,066	\$62,246,664	70%
<i>OFFICE EQUIPMENT</i>	\$10,743,039	\$270,029	3%
<i>TELEVISIONS, RADIOS, STEREOS</i>	\$8,903,889	\$758,174	9%
<i>FIREARMS</i>	\$1,131,759	\$83,736	7%
<i>HOUSEHOLD GOODS</i>	\$2,479,639	\$264,183	11%
<i>CONSUMABLE GOODS</i>	\$4,395,540	\$190,273	4%
<i>LIVESTOCK</i>	\$287,836	\$48,750	17%
<i>MISCELLANEOUS</i>	\$27,966,635	\$1,996,710	7%

# ARREST SUMMARY

## ADULTS

	FELONY			MISDEMEANOR			ADULTS
	MALE	FEMALE	TOTAL	MALE	FEMALE	TOTAL	TOTAL
<b>DEPARTMENT TOTAL*</b>	<b>13,689</b>	<b>3,845</b>	<b>17,534</b>	<b>57,978</b>	<b>10,732</b>	<b>68,710</b>	<b>86,244</b>
<b>REGION I</b>	<b>4,584</b>	<b>1,258</b>	<b>5,842</b>	<b>21,962</b>	<b>4,382</b>	<b>26,344</b>	<b>32,186</b>
<i>CRESCENTA VALLEY REGIONAL</i>	202	55	257	1,454	304	1,758	2,015
<i>EAST LOS ANGELES</i>	969	182	1,151	4,095	507	4,602	5,753
<i>LANCASTER</i>	882	263	1,145	4,023	1,217	5,240	6,385
<i>LOST HILLS REGIONAL</i>	215	34	249	2,691	547	3,238	3,487
<i>PALMDALE</i>	816	296	1,112	2,205	595	2,800	3,912
<i>SANTA CLARITA VALLEY</i>	627	192	819	2,451	409	2,860	3,679
<i>TEMPLE</i>	811	219	1,030	3,682	597	4,279	5,309
<i>TRANSIT SERVICES BUREAU</i>	62	17	79	1,361	206	1,567	1,646
<b>REGION II</b>	<b>4,211</b>	<b>960</b>	<b>5,171</b>	<b>17,507</b>	<b>2,927</b>	<b>20,434</b>	<b>25,605</b>
<i>CARSON</i>	861	358	1,219	2,602	576	3,178	4,397
<i>CENTURY</i>	1,714	272	1,986	8,335	1,154	9,489	11,475
<i>LENNOX</i>	826	144	970	2,733	527	3,260	4,230
<i>MARINA DEL REY</i>	109	26	135	356	98	454	589
<i>LOMITA</i>	204	66	270	1,121	309	1,430	1,700
<i>WEST HOLLYWOOD</i>	497	94	591	2,360	263	2,623	3,214
<b>REGION III</b>	<b>4,601</b>	<b>1,534</b>	<b>6,135</b>	<b>17,522</b>	<b>3,133</b>	<b>20,655</b>	<b>26,790</b>
<i>AVALON</i>	27	5	32	98	16	114	146
<i>INDUSTRY</i>	903	244	1,147	3,271	380	3,651	4,798
<i>LAKEWOOD</i>	1,735	780	2,515	3,924	849	4,773	7,288
<i>NORWALK</i>	825	224	1,049	4,115	881	4,996	6,045
<i>PICO RIVERA</i>	481	120	601	3,289	601	3,890	4,491
<i>WALNUT REGIONAL</i>	630	161	791	2,825	406	3,231	4,022

\* Department total exceeds the sum of station totals by the number of arrests made outside of Sheriff's jurisdiction and miscellaneous arrests within the Sheriff's jurisdiction.

# ARREST SUMMARY

## JUVENILES

<i>(continued)</i>	FELONY			MISDEMEANOR			JUVENILES	JUVENILES & ADULTS
	MALE	FEMALE	TOTAL	MALE	FEMALE	TOTAL	TOTAL	GRAND TOTAL
<b>DEPARTMENT TOTAL*</b>	<b>4,192</b>	<b>1,155</b>	<b>5,347</b>	<b>5,890</b>	<b>1,301</b>	<b>7,191</b>	<b>12,538</b>	<b>98,782</b>
<b>REGION I</b>	<b>1,709</b>	<b>591</b>	<b>2,300</b>	<b>2,569</b>	<b>560</b>	<b>3,129</b>	<b>5,429</b>	<b>37,615</b>
<i>CRESCENTA VALLEY REGIONAL</i>	89	13	102	96	12	108	210	2,225
<i>EAST LOS ANGELES</i>	234	53	287	363	67	430	717	6,470
<i>LANCASTER</i>	384	110	494	520	153	673	1,167	7,552
<i>LOST HILLS REGIONAL</i>	50	6	56	83	25	108	164	3,651
<i>PALMDALE</i>	423	179	602	571	109	680	1,282	5,194
<i>SANTA CLARITA VALLEY</i>	289	160	449	624	135	759	1,208	4,887
<i>TEMPLE</i>	207	62	269	245	53	298	567	5,876
<i>TRANSIT SERVICES BUREAU</i>	33	8	41	67	6	73	114	1,760
<b>REGION II</b>	<b>986</b>	<b>190</b>	<b>1,176</b>	<b>1,404</b>	<b>252</b>	<b>1,656</b>	<b>2,832</b>	<b>28,437</b>
<i>CARSON</i>	241	78	319	210	53	263	582	4,979
<i>CENTURY</i>	434	50	484	712	99	811	1,295	12,770
<i>LENNOX</i>	201	30	231	212	62	274	505	4,735
<i>MARINA DEL REY</i>	16	2	18	13	4	17	35	624
<i>LOMITA</i>	34	9	43	55	11	66	109	1,809
<i>WEST HOLLYWOOD</i>	60	21	81	202	23	225	306	3,520
<b>REGION III</b>	<b>1,456</b>	<b>374</b>	<b>1,830</b>	<b>1,912</b>	<b>489</b>	<b>2,401</b>	<b>4,231</b>	<b>31,021</b>
<i>AVALON</i>	16	2	18	10	5	15	33	179
<i>INDUSTRY</i>	228	47	275	274	35	309	584	5,382
<i>LAKEWOOD</i>	608	193	801	473	95	568	1,369	8,657
<i>NORWALK</i>	256	61	317	344	104	448	765	6,810
<i>PICO RIVERA</i>	105	31	136	375	147	522	658	5,149
<i>WALNUT REGIONAL</i>	243	40	283	436	103	539	822	4,844

\* Department total exceeds the sum of station totals by the number of arrests made outside of Sheriff's jurisdiction and miscellaneous arrests within the Sheriff's jurisdiction.

# ADULTS ARRESTED BY CHARGE AND DISPOSITION

OFFENSES	FELONY ARRESTS				
	FELONIES FILED	D.A. DENIED FELONY: FILING	REDUCED TO MISDEMEANOR	COMPLAINT NOT SOUGHT	D.A. DENIED COMPLAINT
		REDUCED TO MISDEMEANOR	BY DEPARTMENT	BY DEPARTMENT	
<b>TOTALS</b>	<b>24,398</b>	<b>5,361</b>	<b>3,044</b>	<b>1,570</b>	<b>3,515</b>
<b>PART I OFFENSES</b>	<b>8,160</b>	<b>2,731</b>	<b>1,171</b>	<b>781</b>	<b>1,777</b>
<i>CRIMINAL HOMICIDE</i>	185	0	0	1	0
<i>FORCIBLE RAPE</i>	101	3	2	11	32
<i>ROBBERY</i>	1,133	90	27	123	145
<i>AGGRAVATED ASSAULT</i>	3,091	1,473	697	211	1,153
<i>BURGLARY</i>	1,749	685	284	142	183
<i>LARCENY THEFT</i>	1,075	309	97	71	117
<i>GRAND THEFT AUTO</i>	787	171	62	219	141
<i>ARSON</i>	39	0	2	3	6
<b>ALL OTHER OFFENSES</b>	<b>16,238</b>	<b>2,630</b>	<b>1,873</b>	<b>789</b>	<b>1,738</b>
<i>FORGERY</i>	472	98	231	51	76
<i>FRAUD AND NSF CHECKS</i>	123	30	15	13	18
<i>SEX OFFENSES, FELONIES</i>	272	11	4	8	13
<i>SEX OFFENSES, MISDEMEANORS</i>	1	0	0	0	0
<i>NON-AGGRAVATED ASSAULTS</i>	20	11	5	2	0
<i>WEAPON LAWS</i>	752	352	171	54	146
<i>OFFENSES AGAINST FAMILY</i>	5	0	1	1	0
<i>NARCOTICS</i>	9,069	1,495	1,157	84	1,127
<i>LIQUOR LAWS</i>	0	1	0	0	0
<i>DRUNK / ALCOHOL / DRUGS</i>	0	0	0	0	0
<i>DISORDERLY CONDUCT</i>	0	0	0	0	0
<i>VAGRANCY</i>	0	0	0	0	0
<i>GAMBLING</i>	24	1	7	0	0
<i>DRUNK DRIVING VEHICLE / BOAT</i>	75	26	16	1	1
<i>VEHICLE / BOATING LAWS</i>	98	59	31	6	5
<i>VANDALISM</i>	23	23	5	4	7
<i>WARRANTS</i>	2,705	14	3	102	1
<i>RECEIVING STOLEN PROPERTY</i>	721	216	111	183	156
<i>FEDERAL OFFENSES</i>	38	1	1	1	2
<i>FELONIES, MISCELLANEOUS</i>	887	281	113	86	177
<i>MISDEMEANOR, MISCELLANEOUS</i>	953	11	2	193	9
<i>MISCELLANEOUS, NONCRIMINAL</i>	0	0	0	0	0

# ADULTS ARRESTED BY CHARGE AND DISPOSITION

(continued)

OFFENSES	MISDEMEANOR ARRESTS			TOTAL FELONY AND MISDEMEANOR DISPOSITION ARRESTS
	MISDEMEANOR FILED	COMPLAINT NOT SOUGHT BY DEPARTMENT	D.A. DENIED COMPLAINT	
<b>TOTALS</b>	<b>49,534</b>	<b>873</b>	<b>1,374</b>	<b>89,669</b>
<b>PART I OFFENSES</b>	<b>3,121</b>	<b>51</b>	<b>269</b>	<b>18,061</b>
<i>CRIMINAL HOMICIDE</i>	0	0	0	186
<i>FORCIBLE RAPE</i>	0	0	0	149
<i>ROBBERY</i>	0	0	0	1,518
<i>AGGRAVATED ASSAULT</i>	591	32	188	7,436
<i>BURGLARY</i>	28	0	0	3,071
<i>LARCENY THEFT</i>	2,459	19	79	4,226
<i>GRAND THEFT AUTO</i>	42	0	2	1,424
<i>ARSON</i>	1	0	0	51
<b>ALL OTHER OFFENSES</b>	<b>46,413</b>	<b>822</b>	<b>1,105</b>	<b>71,608</b>
<i>FORGERY</i>	53	0	0	981
<i>FRAUD AND NSF CHECKS</i>	104	4	10	317
<i>SEX OFFENSES, FELONIES</i>	77	1	8	394
<i>SEX OFFENSES, MISDEMEANORS</i>	668	5	29	703
<i>NON-AGGRAVATED ASSAULTS</i>	1,151	35	203	1,427
<i>WEAPON LAWS</i>	464	5	27	1,971
<i>OFFENSES AGAINST FAMILY</i>	73	1	1	82
<i>NARCOTICS</i>	4,887	25	214	18,058
<i>LIQUOR LAWS</i>	289	2	24	316
<i>DRUNK / ALCOHOL / DRUGS</i>	363	326	15	704
<i>DISORDERLY CONDUCT</i>	231	9	93	333
<i>VAGRANCY</i>	45	3	8	56
<i>GAMBLING</i>	37	0	10	79
<i>DRUNK DRIVING VEHICLE / BOAT</i>	4,451	40	61	4,671
<i>VEHICLE / BOATING LAWS</i>	7,149	44	55	7,447
<i>VANDALISM</i>	319	6	35	422
<i>WARRANTS</i>	17,027	19	7	19,878
<i>RECEIVING STOLEN PROPERTY</i>	39	1	3	1,430
<i>FEDERAL OFFENSES</i>	5	5	1	54
<i>FELONIES, MISCELLANEOUS</i>	27	10	12	1,593
<i>MISDEMEANOR, MISCELLANEOUS</i>	8,880	245	288	10,581
<i>MISCELLANEOUS, NONCRIMINAL</i>	74	36	1	111

# JUVENILES ARRESTED BY CHARGE, SEX, AND DISPOSITION

OFFENSES	ARRESTED			DISPOSITIONS		
	TOTAL	MALE	FEMALE	HANDLED WITHIN DEPARTMENT	DIVERSION	PROBATION
<b>TOTALS</b>	<b>12,763</b>	<b>10,311</b>	<b>2,452</b>	<b>352</b>	<b>298</b>	<b>162</b>
<b>PART I OFFENSES</b>	<b>5,563</b>	<b>4,361</b>	<b>1,202</b>	<b>171</b>	<b>69</b>	<b>5</b>
<i>CRIMINAL HOMICIDE</i>	28	28	0	0	0	0
<i>FORCIBLE RAPE</i>	12	12	0	0	0	0
<i>ROBBERY</i>	610	551	59	9	2	1
<i>AGGRAVATED ASSAULT</i>	987	756	231	26	6	0
<i>BURGLARY</i>	1,575	1,312	263	61	24	1
<i>LARCENY THEFT</i>	1,624	1,054	570	54	33	2
<i>GRAND THEFT AUTO</i>	678	604	74	13	2	1
<i>ARSON</i>	49	44	5	8	2	0
<b>ALL OTHER OFFENSES</b>	<b>7,200</b>	<b>5,950</b>	<b>1,250</b>	<b>181</b>	<b>229</b>	<b>157</b>
<i>FORGERY</i>	55	37	18	3	0	0
<i>FRAUD AND NSF CHECKS</i>	22	20	2	1	0	0
<i>SEX OFFENSES, FELONIES</i>	51	50	1	0	0	0
<i>SEX OFFENSES, MISDEMEANORS</i>	18	15	3	2	0	0
<i>NON-AGGRAVATED ASSAULTS</i>	336	262	74	17	3	0
<i>WEAPON LAWS</i>	622	582	40	18	4	1
<i>OFFENSES AGAINST FAMILY</i>	1	1	0	0	0	0
<i>NARCOTICS</i>	1,515	1,345	170	22	46	4
<i>LIQUOR LAWS</i>	155	132	23	3	10	0
<i>DRUNK / ALCOHOL / DRUGS</i>	39	34	5	4	3	0
<i>DISORDERLY CONDUCT</i>	237	189	48	17	0	0
<i>VAGRANCY</i>	4	4	0	0	0	0
<i>GAMBLING</i>	2	2	0	0	0	0
<i>DRUNK DRIVING VEHICLE / BOAT</i>	52	46	6	2	0	0
<i>VEHICLE / BOATING LAWS</i>	391	363	28	5	25	0
<i>VANDALISM</i>	491	462	29	12	10	0
<i>WARRANTS</i>	94	77	17	0	2	0
<i>RECEIVING STOLEN PROPERTY</i>	375	345	30	9	1	1
<i>FEDERAL OFFENSES</i>	11	8	3	0	0	0
<i>FELONIES, MISCELLANEOUS</i>	290	241	49	14	5	0
<i>MISDEMEANOR, MISCELLANEOUS</i>	1,637	1,319	318	36	68	6
<i>MISSING PERSONS</i>	13	6	7	2	0	2
<i>JUVENILE, NON-CRIMINAL</i>	713	353	360	13	36	138
<i>MISCELLANEOUS, NONCRIMINAL</i>	76	57	19	1	16	5



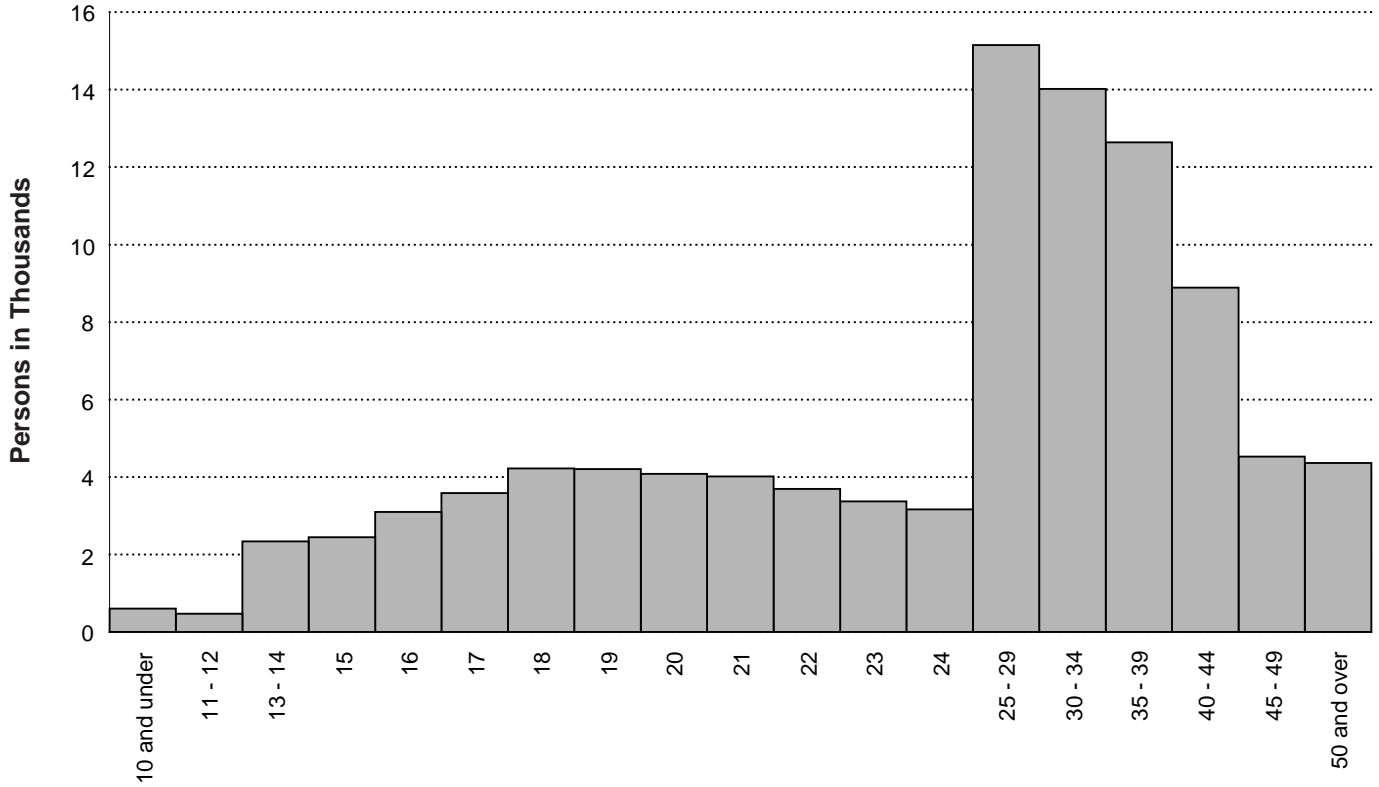
# JUVENILES ARRESTED BY CHARGE, SEX, AND DISPOSITION

(continued)

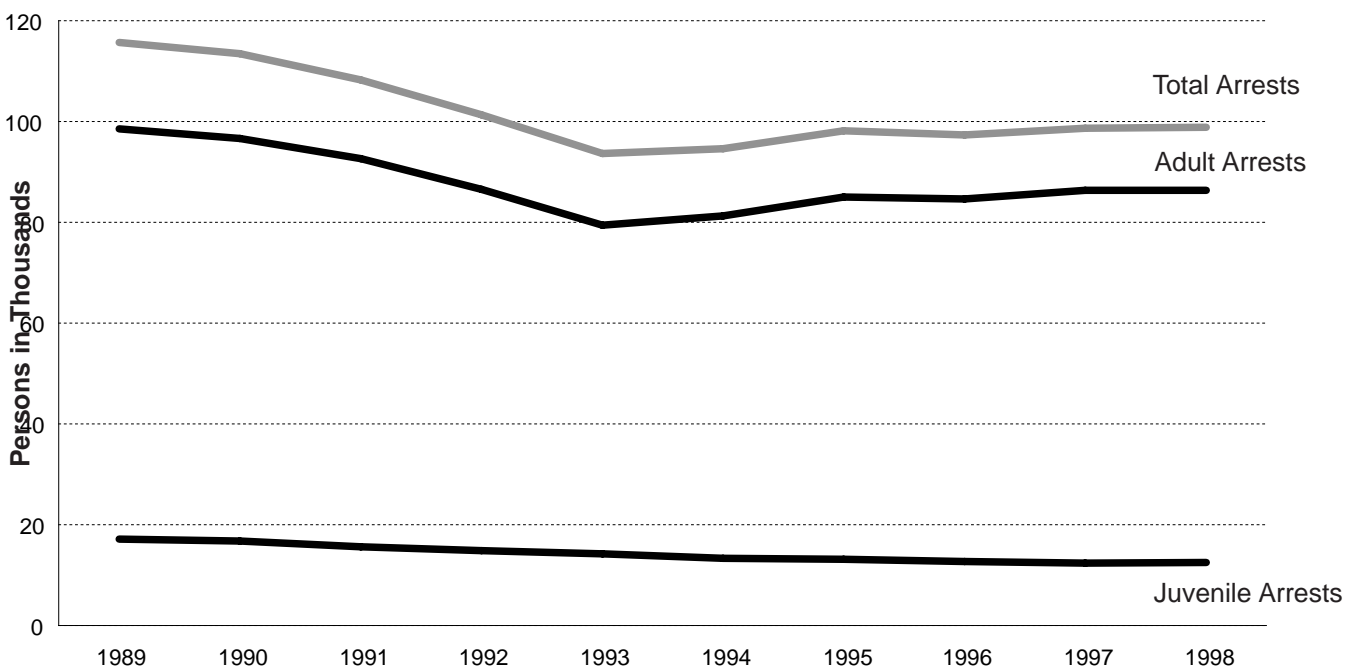
OFFENSES	DISPOSITIONS				
	NON- DETAINED PETITION FILED	DETAINED PETITION FILED	EXONERATED AND RELEASED	INSUFFICIENT EVIDENCE RELEASED	RELEASED TO ANOTHER LAW ENF. AGENCY
<b>TOTALS</b>	<b>6,100</b>	<b>3,854</b>	<b>53</b>	<b>104</b>	<b>1,840</b>
<b>PART I OFFENSES</b>	<b>3,089</b>	<b>1,653</b>	<b>29</b>	<b>55</b>	<b>492</b>
<i>CRIMINAL HOMICIDE</i>	2	26	0	0	0
<i>FORCIBLE RAPE</i>	3	9	0	0	0
<i>ROBBERY</i>	218	358	6	8	8
<i>AGGRAVATED ASSAULT</i>	508	408	1	9	29
<i>BURGLARY</i>	1,033	407	7	14	28
<i>LARCENY THEFT</i>	929	184	1	7	414
<i>GRAND THEFT AUTO</i>	371	254	9	16	12
<i>ARSON</i>	25	7	5	1	1
<b>ALL OTHER OFFENSES</b>	<b>3,011</b>	<b>2,201</b>	<b>24</b>	<b>49</b>	<b>1,348</b>
<i>FORGERY</i>	40	10	0	1	1
<i>FRAUD AND NSF CHECKS</i>	11	8	0	0	2
<i>SEX OFFENSES, FELONIES</i>	24	27	0	0	0
<i>SEX OFFENSES, MISDEMEANORS</i>	13	0	0	0	3
<i>NON-AGGRAVATED ASSAULTS</i>	204	81	1	5	25
<i>WEAPON LAWS</i>	365	218	0	4	12
<i>OFFENSES AGAINST FAMILY</i>	0	0	0	0	1
<i>NARCOTICS</i>	897	235	2	7	302
<i>LIQUOR LAWS</i>	85	9	1	0	47
<i>DRUNK / ALCOHOL / DRUGS</i>	20	2	0	0	10
<i>DISORDERLY CONDUCT</i>	103	14	0	1	102
<i>VAGRANCY</i>	3	0	0	0	1
<i>GAMBLING</i>	2	0	0	0	0
<i>DRUNK DRIVING VEHICLE / BOAT</i>	39	4	0	0	7
<i>VEHICLE / BOATING LAWS</i>	70	15	2	1	273
<i>VANDALISM</i>	346	62	0	3	58
<i>WARRANTS</i>	2	87	0	0	3
<i>RECEIVING STOLEN PROPERTY</i>	232	110	3	14	5
<i>FEDERAL OFFENSES</i>	0	7	1	0	3
<i>FELONIES, MISCELLANEOUS</i>	156	102	0	8	5
<i>MISDEMEANOR, MISCELLANEOUS</i>	273	928	0	5	321
<i>MISSING PERSONS</i>	2	2	0	0	5
<i>JUVENILE, NON-CRIMINAL</i>	110	248	14	0	154
<i>MISCELLANEOUS, NONCRIMINAL</i>	14	32	0	0	8

# ARRESTS

Persons Arrested for Part I Offenses by Age



Adult and Juvenile Arrests by Year



# ADULTS ARRESTED BY CHARGE, SEX, AND AGE

		SEX	TOTAL	18	19	20	21	22	23
<b>TOTALS</b>			<b>86,244</b>	<b>4,224</b>	<b>4,205</b>	<b>4,079</b>	<b>4,011</b>	<b>3,695</b>	<b>3,371</b>
<b>MALE</b>	M	<b>71,667</b>	<b>3,703</b>	<b>3,653</b>	<b>3,541</b>	<b>3,489</b>	<b>3,187</b>	<b>2,890</b>	
<b>FEMALE</b>	F	<b>14,577</b>	<b>521</b>	<b>552</b>	<b>538</b>	<b>522</b>	<b>508</b>	<b>481</b>	
<b>PART I OFFENSES</b>									
<i>CRIMINAL HOMICIDE</i>	M	147	19	22	9	18	5	8	
	F	15	0	0	1	0	0	0	
<i>FORCIBLE RAPE</i>	M	158	13	12	10	11	4	4	
	F	0	0	0	0	0	0	0	
<i>ROBBERY</i>	M	1,338	205	178	116	100	68	64	
	F	135	15	7	8	8	9	5	
<i>AGGRAVATED ASSAULT</i>	M	6,069	274	246	248	240	240	215	
	F	1,226	45	49	41	48	33	41	
<i>BURGLARY</i>	M	2,309	324	213	174	127	79	88	
	F	694	57	36	33	35	18	34	
<i>LARCENY THEFT</i>	M	2,555	239	178	150	118	96	105	
	F	1,557	122	108	66	71	63	43	
<i>GRAND THEFT AUTO</i>	M	1,073	167	116	97	85	53	53	
	F	206	18	16	15	14	5	16	
<i>ARSON</i>	M	40	2	3	1	2	0	4	
	F	12	0	1	0	0	0	0	
<b>ALL OTHER OFFENSES</b>									
<i>FORGERY</i>	M	628	32	33	59	31	34	24	
	F	303	22	17	15	14	10	14	
<i>FRAUD AND NSF CHECKS</i>	M	212	11	15	8	14	7	9	
	F	74	3	3	6	5	0	4	
<i>SEX OFFENSES, FELONIES</i>	M	542	30	27	24	18	19	15	
	F	13	1	2	0	0	2	1	
<i>SEX OFFENSES, MISDEMEANORS</i>	M	456	5	7	7	7	7	15	
	F	199	1	4	3	5	0	7	
<i>NON-AGGRAVATED ASSAULTS</i>	M	1,129	51	51	52	40	52	42	
	F	222	8	10	9	9	13	7	
<i>WEAPON LAWS</i>	M	1,771	176	171	123	142	90	84	
	F	86	2	3	3	5	4	4	
<i>OFFENSES AGAINST FAMILY</i>	M	75	0	1	3	5	5	2	
	F	8	0	0	0	0	0	0	

# ADULTS ARRESTED BY CHARGE, SEX, AND AGE

(continued)

		SEX	24	25-29	30-34	35-39	40-44	45-49	50 and OVER
<b>TOTALS</b>			<b>3,166</b>	<b>15,152</b>	<b>14,021</b>	<b>12,642</b>	<b>8,887</b>	<b>4,525</b>	<b>4,266</b>
<b>MALE</b>	M	<b>2,713</b>	<b>12,666</b>	<b>11,328</b>	<b>9,960</b>	<b>7,136</b>	<b>3,745</b>	<b>3,656</b>	
<b>FEMALE</b>	F	<b>453</b>	<b>2,486</b>	<b>2,693</b>	<b>2,682</b>	<b>1,751</b>	<b>780</b>	<b>610</b>	
<b>PART I OFFENSES</b>									
<i>CRIMINAL HOMICIDE</i>	M	6	19	10	8	11	3	9	
	F	1	5	4	2	2	0	0	
<i>FORCIBLE RAPE</i>	M	10	24	29	17	9	8	7	
	F	0	0	0	0	0	0	0	
<i>ROBBERY</i>	M	49	198	151	111	56	31	11	
	F	4	19	22	19	12	3	4	
<i>AGGRAVATED ASSAULT</i>	M	217	1137	1030	908	608	320	386	
	F	29	210	243	212	149	58	68	
<i>BURGLARY</i>	M	70	333	307	267	197	74	56	
	F	20	122	104	109	64	29	33	
<i>LARCENY THEFT</i>	M	77	371	350	319	246	144	162	
	F	53	239	222	190	174	99	107	
<i>GRAND THEFT AUTO</i>	M	54	151	108	96	46	28	19	
	F	7	29	38	28	9	6	5	
<i>ARSON</i>	M	3	3	7	5	5	4	1	
	F	0	2	3	4	2	0	0	
<b>ALL OTHER OFFENSES</b>									
<i>FORGERY</i>	M	32	129	82	80	38	35	19	
	F	15	60	47	42	28	17	2	
<i>FRAUD AND NSF CHECKS</i>	M	11	46	23	28	15	13	12	
	F	3	18	12	9	7	4	0	
<i>SEX OFFENSES, FELONIES</i>	M	13	73	99	66	51	33	74	
	F	0	3	3	0	0	1	0	
<i>SEX OFFENSES, MISDEMEANORS</i>	M	17	63	66	91	49	33	89	
	F	6	28	35	36	42	18	14	
<i>NON-AGGRAVATED ASSAULTS</i>	M	42	207	183	157	129	64	59	
	F	10	40	37	35	26	11	7	
<i>WEAPON LAWS</i>	M	71	313	202	179	111	49	60	
	F	4	13	23	13	8	3	1	
<i>OFFENSES AGAINST FAMILY</i>	M	2	13	12	17	7	5	3	
	F	0	0	1	6	0	1	0	

# ADULTS ARRESTED BY CHARGE, SEX, AND AGE

		SEX	TOTAL	18	19	20	21	22	23
<b>ALL OTHER OFFENSES</b>									
<i>NARCOTICS</i>	M	13,187	602	586	534	537	486	472	
	F	3,294	73	79	113	81	92	79	
<i>LIQUOR LAWS</i>	M	282	85	58	37	7	4	7	
	F	35	5	6	2	1	0	1	
<i>DRUNK ALCOHOL / DRUGS</i>	M	1,590	33	30	39	39	49	44	
	F	136	7	5	4	3	3	8	
<i>DISORDERLY CONDUCT</i>	M	269	35	33	25	17	15	13	
	F	49	6	2	3	1	3	1	
<i>VAGRANCY</i>	M	40	0	0	1	2	1	3	
	F	17	0	1	0	2	0	5	
<i>GAMBLING</i>	M	52	5	5	5	2	0	1	
	F	4	0	0	0	0	0	0	
<i>DRUNK DRIVING VEHICLE / BOAT</i>	M	4,088	61	80	100	148	151	150	
	F	498	5	6	11	17	20	10	
<i>VEHICLE / BOATING LAWS</i>	M	6,320	311	385	382	443	401	354	
	F	857	26	36	35	34	42	33	
<i>VANDALISM</i>	M	348	69	44	30	20	22	10	
	F	52	1	5	3	3	2	1	
<i>WARRANTS</i>	M	15,652	278	574	799	796	771	688	
	F	3,120	19	63	102	107	131	107	
<i>RECEIVING STOLEN PROPERTY</i>	M	1,160	147	111	72	64	57	59	
	F	117	5	9	7	9	2	4	
<i>FEDERAL OFFENSES</i>	M	43	1	5	3	4	1	3	
	F	9	0	0	0	1	0	0	
<i>FELONIES, MISCELLANEOUS</i>	M	1,381	104	98	59	59	74	51	
	F	270	19	20	14	12	10	9	
<i>MISDEMEANORS, MISCELLANEOUS</i>	M	8,657	410	356	369	391	392	299	
	F	1,346	59	62	44	37	45	47	
<i>MISCELLANEOUS, NON-CRIMINAL</i>	M	96	14	15	5	2	4	4	
	F	23	2	2	0	0	1	0	

# ADULTS ARRESTED BY CHARGE, SEX, AND AGE

(continued)

		SEX	24	25-29	30-34	35-39	40-44	45-49	50 and OVER
<b>ALL OTHER OFFENSES</b>									
NARCOTICS	M		443	2235	2333	2209	1569	710	471
	F		93	501	686	778	461	182	76
LIQUOR LAWS	M		2	9	21	13	14	5	20
	F		0	0	3	9	2	2	4
DRUNK ALCOHOL / DRUGS	M		60	246	262	277	221	123	167
	F		0	12	25	29	22	7	11
DISORDERLY CONDUCT	M		7	37	31	19	16	8	13
	F		0	5	5	14	3	3	3
VAGRANCY	M		3	8	6	5	2	3	6
	F		0	0	0	2	4	1	2
GAMBLING	M		3	16	9	3	1	0	2
	F		0	2	0	0	2	0	0
DRUNK DRIVING VEHICLE / BOAT	M		143	778	684	648	460	279	406
	F		11	74	88	95	63	40	58
VEHICLE / BOATING LAWS	M		305	1303	901	614	464	240	217
	F		40	198	153	117	80	33	30
VANDALISM	M		10	45	32	26	20	15	5
	F		4	6	6	8	4	3	6
WARRANTS	M		678	3080	2702	2264	1601	806	615
	F		104	617	629	617	378	153	93
RECEIVING STOLEN PROPERTY	M		39	204	150	112	77	31	37
	F		6	25	14	22	9	4	1
FEDERAL OFFENSES	M		2	11	6	4	0	2	1
	F		0	2	2	1	2	0	1
FELONIES, MISCELLANEOUS	M		45	229	210	178	127	72	75
	F		7	40	43	43	31	11	11
MISDEMEANORS, MISCELLANEOUS	M		293	1376	1314	1230	979	599	649
	F		35	211	242	236	167	91	70
MISCELLANEOUS, NON-CRIMINAL	M		6	9	8	9	7	8	5
	F		1	5	3	6	0	0	3

# JUVENILES ARRESTED BY CHARGE, SEX, AND AGE

	SEX	TOTAL	10 and Under	11 - 12	13 - 14	15	16	17
<b>TOTALS</b>		<b>12,538</b>	<b>605</b>	<b>474</b>	<b>2,335</b>	<b>2,442</b>	<b>3,099</b>	<b>3,583</b>
<b>MALE</b>	M	<b>10,082</b>	<b>338</b>	<b>341</b>	<b>1,774</b>	<b>1,992</b>	<b>2,560</b>	<b>3,077</b>
<b>FEMALE</b>	F	<b>2,456</b>	<b>267</b>	<b>133</b>	<b>561</b>	<b>450</b>	<b>539</b>	<b>506</b>
<b>PART I OFFENSES</b>								
<i>CRIMINAL HOMICIDE</i>	M	28	1	0	3	1	9	14
	F	1	0	0	0	0	0	1
<i>FORCIBLE RAPE</i>	M	17	0	0	1	3	5	8
	F	0	0	0	0	0	0	0
<i>ROBBERY</i>	M	529	1	16	92	84	144	192
	F	55	0	1	16	8	13	17
<i>AGGRAVATED ASSAULT</i>	M	741	5	24	147	151	168	246
	F	229	1	10	63	40	63	52
<i>BURGLARY</i>	M	1,257	8	62	256	292	325	314
	F	256	4	13	60	67	54	58
<i>LARCENY THEFT</i>	M	1,007	7	50	265	230	228	227
	F	542	3	29	141	124	115	130
<i>GRAND THEFT AUTO</i>	M	564	0	4	75	153	158	174
	F	67	0	3	14	15	23	12
<i>ARSON</i>	M	49	3	7	17	5	11	6
	F	5	0	2	3	0	0	0
<b>ALL OTHER OFFENSES</b>								
<i>FORGERY</i>	M	36	0	0	3	5	10	18
	F	17	0	0	1	5	5	6
<i>FRAUD AND NSF CHECKS</i>	M	17	0	0	0	4	4	9
	F	1	0	0	0	0	0	1
<i>SEX OFFENSES, FELONIES</i>	M	74	2	12	27	13	8	12
	F	2	0	0	0	0	1	1
<i>SEX OFFENSES, MISDEMEANORS</i>	M	16	0	0	5	4	6	1
	F	3	0	0	0	2	1	0
<i>NON-AGGRAVATED ASSAULTS</i>	M	240	0	13	46	49	60	72
	F	71	0	3	26	14	19	9
<i>WEAPON LAWS</i>	M	566	3	15	105	122	152	169
	F	37	0	0	7	11	12	7
<i>OFFENSES AGAINST FAMILY</i>	M	1	1	0	0	0	0	0
	F	0	0	0	0	0	0	0

# JUVENILES ARRESTED BY CHARGE, SEX, AND AGE

(continued)

		SEX	TOTAL	10 and Under	11 - 12	13 - 14	15	16	17
<b>ALL OTHER OFFENSES</b>									
NARCOTICS	M		1,287	0	11	185	251	361	479
	F		156	1	2	38	18	48	49
LIQUOR LAWS	M		134	0	1	11	20	34	68
	F		22	0	1	2	3	7	9
DRUNK ALCOHOL / DRUGS	M		75	1	1	18	16	18	21
	F		9	0	0	1	1	5	2
DISORDERLY CONDUCT	M		167	0	4	20	46	53	44
	F		43	0	2	15	8	11	7
VAGRANCY	M		4	0	0	0	2	2	0
	F		0	0	0	0	0	0	0
GAMBLING	M		4	0	1	0	1	2	0
	F		0	0	0	0	0	0	0
DRUNK DRIVING VEHICLE / BOAT	M		42	2	0	1	3	6	30
	F		6	0	0	0	0	1	5
VEHICLE / BOATING LAWS	M		346	1	2	23	28	100	192
	F		24	0	0	3	4	5	12
VANDALISM	M		454	2	24	116	106	101	105
	F		27	0	2	9	7	4	5
WARRANTS	M		70	0	0	10	12	24	24
	F		15	0	0	3	5	3	4
RECEIVING STOLEN PROPERTY	M		317	0	5	58	66	81	107
	F		25	0	1	9	6	3	6
FEDERAL OFFENSES	M		8	0	0	1	0	1	6
	F		3	0	1	0	0	0	2
FELONIES, MISCELLANEOUS	M		238	0	7	40	43	65	83
	F		44	0	1	12	8	12	11
MISDEMEANORS, MISCELLANEOUS	M		1,306	7	29	208	255	383	424
	F		315	2	11	68	65	94	75
PERSONS MISSING	M		6	0	0	0	1	4	1
	F		4	0	1	0	1	1	1
JUVENILE, NON-CRIMINAL	M		426	279	50	35	19	24	19
	F		451	244	49	67	35	36	20
MISCELLANEOUS, NON-CRIMINAL	M		56	15	3	6	7	13	12
	F		26	12	1	3	3	3	4



# DOMESTIC VIOLENCE

	TOTAL		PERCENT CHANGE	WEAPON INVOLVED	NO WEAPON INVOLVED
	1997	1998			
<b>DEPARTMENT TOTAL</b>	<b>10,491</b>	<b>9,707</b>	<b>-7</b>	<b>7,131</b>	<b>2,576</b>
<b>REGION I</b>	<b>3,910</b>	<b>3,410</b>	<b>-13</b>	<b>2,655</b>	<b>755</b>
<i>CRESCENTA VALLEY REGIONAL</i>	171	157	-8	121	36
<i>EAST LOS ANGELES</i>	622	517	-17	474	43
<i>LANCASTER</i>	1,703	753	-56	628	125
<i>LOST HILLS REGIONAL</i>	247	192	-22	122	70
<i>PALMDALE</i>	NA	707		564	143
<i>SANTA CLARITA VALLEY</i>	609	553	-9	370	183
<i>TEMPLE</i>	557	518	-7	364	154
<i>TRANSIT SERVICES BUREAU</i>	1	13	1200	12	1
<b>REGION II</b>	<b>2,176</b>	<b>2,161</b>	<b>-1</b>	<b>1,804</b>	<b>357</b>
<i>CARSON</i>	432	439	2	305	134
<i>CENTURY</i>	700	723	3	683	40
<i>LENNOX</i>	560	565	1	492	73
<i>LOMITA</i>	264	258	-2	188	70
<i>MARINA DEL REY</i>	94	81	-14	57	24
<i>WEST HOLLYWOOD</i>	126	95	-25	79	16
<b>REGION III</b>	<b>4,405</b>	<b>4,136</b>	<b>-6</b>	<b>2,672</b>	<b>1,464</b>
<i>AVALON</i>	16	19	19	17	2
<i>INDUSTRY</i>	727	885	22	552	333
<i>LAKWOOD</i>	2,002	1,660	-17	875	785
<i>NORWALK</i>	735	621	-16	533	88
<i>PICO RIVERA</i>	295	431	46	297	134
<i>WALNUT REGIONAL</i>	630	520	-17	398	122

# FIELD OPERATIONS SERVICES SUMMARY

	CALLS			OBSERVATIONS			ARRESTS			
	1997	1998	PERCENT CHANGE	1997	1998	PERCENT CHANGE	1997	1998	PERCENT CHANGE	
<b>DEPARTMENT TOTAL</b>										
<b>SPECIALIZED UNITS</b>										
<b>REGION I</b>										
CRESCENTA VALLEY REGIONAL										
EAST LOS ANGELES										
LANCASTER										
LOST HILLS REGIONAL										
PALMDALE*										
SANTA CLARITA VALLEY										
TEMPLE										
TRANSIT SERVICES BUREAU										
<b>REGION II</b>	<b>221,249</b>	<b>209,609</b>	<b>-5</b>	<b>292,061</b>	<b>297,288</b>	<b>2</b>	<b>26,538</b>	<b>25,482</b>	<b>-4</b>	
CARSON	47,976	45,064	-6	65,151	65,407	0	4,824	4,886	1	
CENTURY	69,825	65,857	-6	68,103	66,667	-2	10,300	10,427	1	
LENNOX	41,986	41,569	-1	46,946	45,471	-3	4,763	4,656	-2	
MARINA DEL REY	13,266	12,394	-7	31,516	31,800	1	724	777	7	
LOMITA	22,771	21,078	-7	49,180	54,770	11	1,762	1,690	-4	
WEST HOLLYWOOD	25,425	23,647	-7	31,165	33,173	6	4,165	3,046	-27	
<b>REGION III</b>	<b>365,775</b>	<b>357,222</b>	<b>-2</b>	<b>417,191</b>	<b>428,925</b>	<b>3</b>	<b>33,141</b>	<b>33,895</b>	<b>2</b>	
AVALON	4,050	3,580	-12	11,946	13,815	16	147	132	-10	
INDUSTRY	70,899	72,576	2	81,750	79,367	-3	6,029	5,595	-7	
LAKEWOOD	123,094	122,371	-1	91,813	97,806	7	7,815	9,222	18	
NORWALK	70,762	67,025	-5	98,077	98,657	1	10,632	9,203	-13	
PICO RIVERA	31,897	31,050	-3	31,217	31,408	1	4,493	4,386	-2	
WALNUT REGIONAL	65,073	60,620	-7	102,388	107,872	5	4,025	5,357	33	

\* Palmdale Station's numbers are included with Lancaster totals.

# TRAFFIC STATISTICS\*

	DUI ARRESTS		DUI COLLISIONS		NON-DUI COLLISIONS		PEDESTRIAN FATALITIES / INJURIES	
	1997	1998	1997	1998	1997	1998	1997	1998
	%		%		%		%	
	1997	1998	1997	1998	1997	1998	1997	1998
	CHANGE		CHANGE		CHANGE		CHANGE	
<b>DEPARTMENT TOTAL</b>								
<b>REGION I</b>								
CRESCENTA VALLEY REGIONAL								
EAST LOS ANGELES								
LANCASTER								
LOST HILLS REGIONAL								
PALMDALE								
SANTA CLARITA VALLEY								
TEMPLE								
<b>REGION II</b>								
CARSON	203	304	0.1	30	-7.4	1,011	302	3
CENTURY	155	180	16.1	44	-70.5	574	582	2
LENNOX / MARINA DEL REY	157	99	-36.9	5	-40.0	406	362	
LOMITA	109	63	-42.2	20	-15.0	584	655	2
WEST HOLLYWOOD	237	232	-2.1	71	23.9	1,064	1,005	8
<b>REGION III</b>	<b>1,159</b>	<b>1,181</b>	<b>1.9</b>	<b>322</b>	<b>-13.7</b>	<b>8,306</b>	<b>9,100</b>	<b>20</b>
AVALON	4	12	200.0	0	NA	33	44	
INDUSTRY	336	191	-43.2	54	-31.5	1,028	1,152	
LAKEWOOD	336	306	-8.9	129	-19.4	3,585	4,126	13
NORWALK	232	321	38.4	78	-6.4	1,923	2,023	
PICO RIVERA	138	201	45.7	37	8.1	695	705	2
WALNUT REGIONAL	113	150	32.7	24	-16.7	1,042	1,050	2

\* These figures indicate only those statistics reported by each individual unit to Traffic Services Bureau.

# TRAFFIC STATISTICS\*

(continued)

	HAZARDOUS CITATIONS			NONHAZARDOUS CITATIONS			SEAT BELTS / CHILD SEAT CITATIONS		
	1997	1998	% CHANGE	1997	1998	% CHANGE	1997	1998	% CHANGE
<b>DEPARTMENT TOTAL</b>									
<b>REGION I</b>									
CRESCENTA VALLEY REGIONAL									
EAST LOS ANGELES									
LANCASTER									
LOST HILLS REGIONAL									
PALMDALE									
SANTA CLARITA VALLEY									
TEMPLE									
<b>REGION II</b>									
CARSON									
CENTURY									
LENNOX / MARINA DEL REY	4,398	6,541	48.7	2,686	3,207	19.4	761	302	
LOMITA	9,117	9,339	2.4	1,557	1,894	21.6	358	182	
WEST HOLLYWOOD	9,147	7,602	-16.9	2,037	2,879	41.3	961	498	
<b>REGION III</b>	59,937	69,464	15.9	18,323	20,014	9.2	5,945	6,166	
AVALON	39	65	66.7	416	220	-47.1	0	0	
INDUSTRY	11,687	11,144	-4.6	2,879	3,083	7.1	950	892	
LAKEWOOD	16,619	22,219	33.7	4,272	5,661	32.5	1,977	2,630	
NORWALK	12,572	15,838	26.0	3,641	4,001	9.9	1,114	1,271	
PICO RIVERA	3,594	3,863	7.5	3,357	3,346	-0.3	470	451	
WALNUT REGIONAL	15,426	16,335	5.9	3,758	3,703	-1.5	1,434	922	

\* These figures indicate only those statistics reported by each individual unit to Traffic Services Detail.

# SCIENTIFIC SERVICES BUREAU

CALENDAR YEAR 1998		TOTALS
<b>BUREAU SUMMARY</b>		
<i>TOTAL SUBMISSIONS RECEIVED</i>		68,701
<i>TOTAL SUBMISSIONS COMPLETED</i>		66,683
<i>TOTAL COURT APPEARANCES</i>		1,185
<i>TOTAL HOURS IN COURT</i>		4,697
<b>FIREARMS</b>		
<i>TOTAL SUBMISSIONS RECEIVED</i>		2,736
<i>TOTAL SUBMISSIONS COMPLETED</i>		2,373
<i>FIELD INVESTIGATIONS</i>		106
<i>FIELD INVESTIGATION HOURS</i>		480
<i>OFFICER INVOLVED SHOOTINGS</i>		50
<i>TRAINING HOURS RECEIVED</i>		3,126
<i>TRAINING HOURS PROVIDED</i>		2,214
<i>TOTAL COURT APPEARANCES</i>		158
<i>TOTAL COURT HOURS</i>		648
<b>FORENSIC BIOLOGY</b>		
<i>ACTIVE SUBMISSIONS RECEIVED</i>		2,335
<i>ACTIVE SUBMISSIONS COMPLETED</i>		1,801
<i>SUBMISSIONS PURGED/RETURNED</i>		436
<i>FIELD INVESTIGATIONS</i>		109
<i>FIELD INVESTIGATION HOURS</i>		674
<i>TRAINING HOURS RECEIVED</i>		2,851
<i>TRAINING HOURS PROVIDED</i>		1,001
<i>TOTAL COURT APPEARANCES</i>		57
<i>TOTAL COURT HOURS</i>		319
<b>IDENTIFICATION / CRIME SCENE INVESTIGATION</b>		
<i>FIELD INVESTIGATIONS HANDLED</i>		11,644
<i>MAJOR CALLS HANDLED</i>		640
<i>AFTER HOURS CALL-OUTS</i>		581
<i>HOMICIDES</i>		391
<i>CHEMICAL PROCESSING RECEIVED</i>		1,427
<i>LATENT COMPARISON IDENTIFICATIONS</i>		746
<i>TRAINING HOURS RECEIVED</i>		2,853
<i>TRAINING HOURS PROVIDED</i>		541
<i>TOTAL COURT APPEARANCES</i>		361
<i>TOTAL COURT HOURS</i>		1,266

# SCIENTIFIC SERVICES BUREAU

CALENDAR YEAR 1998		TOTALS
<b>IDENTIFICATION / CRIME SCENE INVESTIGATION (continued)</b>		
<i>CAL-ID SUBMISSIONS RUN</i>		1,565
<i>CAL-ID PERSONS IDENTIFIED</i>		433
<i>CAL-ID HIT RATIO (%)</i>		27.7%
<b>NARCOTICS LABORATORIES</b>		
<i>TOTAL SUBMISSIONS RECEIVED</i>		37,916
<i>TOTAL SUBMISSIONS COMPLETED</i>		37,999
<i>EARLY DISPOSITION SUBMISSIONS</i>		12,639
<i>TRAINING HOURS RECEIVED</i>		4,651
<i>TRAINING HOURS PROVIDED</i>		1,451
<i>TOTAL COURT APPEARANCES</i>		235
<i>TOTAL COURT HOURS</i>		1,156
<b>PHOTOGRAPHIC UNIT</b>		
<i>BLACK AND WHITE NEGATIVES</i>		6,357
<i>BLACK AND WHITE PRINTS</i>		2,302
<i>COLOR NEGATIVES</i>		401,801
<i>COLOR PRINTS</i>		293,631
<i>COLOR SLIDES</i>		5,701
<i>SHOOTING ASSIGNMENTS</i>		735
<i>STUDIO MAN-HOURS</i>		1,827
<i>FIELD MAN-HOURS</i>		598
<i>OUTSIDE AGENCIES</i>		1,660
<i>MAINTENANCE AND REPAIR HOURS</i>		1,645
<b>PHYSICAL EVIDENCE SECTION</b>		
<i>TOTAL SUBMISSIONS RECEIVED</i>		1,747
<i>TOTAL SUBMISSIONS COMPLETED</i>		835
<i>SUBMISSIONS PURGED / RETURNED</i>		449
<i>FIELD INVESTIGATIONS</i>		110
<i>FIELD INVESTIGATIONS HOURS</i>		797
<i>TRAINING HOURS RECEIVED</i>		1,654
<i>TRAINING HOURS PROVIDED</i>		156
<i>TOTAL COURT APPEARANCES</i>		99
<i>TOTAL COURT HOURS</i>		369
<b>POLYGRAPH SECTION</b>		
<i>TOTAL CASES COMPLETED</i>		3,893
<i>PRE-EMPLOYMENT EXAMINATIONS</i>		3,426
<i>CRIMINAL SPECIFIC EXAMINATIONS</i>		264
<i>CONFERENCES HOURS ATTENDED</i>		1,684
<i>TRAINING HOURS RECEIVED</i>		341
<i>TRAINING HOURS PROVIDED</i>		26

# SCIENTIFIC SERVICES BUREAU

CALENDAR YEAR 1998		TOTALS
<b>QUESTIONED DOCUMENTS</b>		
<i>TOTAL SUBMISSIONS RECEIVED</i>		243
<i>TOTAL SUBMISSIONS COMPLETED</i>		206
<i>TRAINING HOURS RECEIVED</i>		352
<i>TRAINING HOURS PROVIDED</i>		313
<i>TOTAL COURT APPEARANCES</i>		13
<i>TOTAL COURT HOURS</i>		68
<b>TOXICOLOGY</b>		
<i>TRAINING HOURS RECEIVED</i>		2,943
<i>TRAINING HOURS PROVIDED</i>		619
<i>TOTAL COURT APPEARANCES</i>		182
<i>TOTAL COURT HOURS</i>		875
<b>TOXICOLOGY UNIT</b>		
<i>TOTAL SUBMISSIONS RECEIVED</i>		12,250
<i>TOTAL SUBMISSIONS COMPLETED</i>		12,250
<b>BLOOD ALCOHOL UNIT</b>		
<i>TOTAL SUBMISSIONS RECEIVED</i>		8,049
<i>TOTAL SUBMISSIONS COMPLETED</i>		7,633
<i>BREATH SUBMISSIONS</i>		23,507
<b>TRAINING AND APPLICATIONS</b>		
<i>PROJECTS HOURS</i>		3,288
<i>TRAINING HOURS RECEIVED</i>		356
<i>TRAINING HOURS PROVIDED</i>		136
<b>OTHER SUMMARY</b>		
<b>DUI - Submissions examined under Section 1463.14 of the Penal Code.</b>	<b>TOTAL</b>	<b>32,214</b>
<i>BLOOD / URINE ALCOHOL</i>		6,994
<i>BLOOD / URINE DRUGS</i>		1,713
<i>BREATH TESTS</i>		23,507
<b>CONTROLLED SUBSTANCES - Submissions examined under Section 11372.5 of the Health and Safety Code.</b>		
	<b>TOTAL</b>	<b>46,077</b>
<i>NARCOTICS SECTION</i>		37,799
<i>TOXICOLOGY SECTION</i>		8,278

# AERO BUREAU

ACTIVITY	MISSIONS	FLIGHT TIME
INVESTIGATIONS	11	8.3
FLIGHT TRAINING	358	714.7
TRANSPORTATION FLIGHTS:		
<i>EXECUTIVE</i>	13	29.1
<i>PRISONER</i>	18	32.8
<i>GENERAL</i>	88	192.5
PHOTO	39	64.2
SURVEILLANCE FLIGHTS:		
<i>NARCOTICS</i>	399	879.1
<i>OTHER</i>	6	19.5
SEARCH	25	90.7
RESCUE (101 Victims Transported)	209	493.8
STATIC DISPLAYS	21	32.8
RECONNAISSANCE	13	35.0
MAINTENANCE FLIGHTS	111	115.5
<b>SUBTOTALS</b>	<b>1,311</b>	<b>2,708.0</b>
<b>PATROLS</b>		
ANTELOPE VALLEY PATROL	240	820.8
SANTA CLARITA PATROL	273	807.8
MALIBU PATROL	221	788.6
L.A. BASIN PATROLS	1,481	6,619.5
<b>SUBTOTALS</b>	<b>2,215</b>	<b>9,036.7</b>
<b>TOTALS</b>	<b>3,526</b>	<b>11,744.7</b>



# JUVENILE INVESTIGATIONS BUREAU

## Caseload by Station Area

	1995	1996	*1997	1998
<b>DEPARTMENT TOTAL</b>	<b>3,058</b>	<b>3,231</b>	<b>3,200</b>	<b>2,963</b>
<b>REGION I</b>	<b>1,179</b>	<b>1,387</b>	<b>1,378</b>	<b>1,228</b>
<i>CRESCENTA VALLEY REGIONAL</i>	75	98	86	67
<i>EAST LOS ANGELES</i>	213	242	226	185
<i>LANCASTER</i>	553	630	656	327
<i>LOST HILLS REGIONAL</i>	41	48	62	43
<i>PALMDALE</i>	** (LAN)	** (LAN)	** (LAN)	276
<i>SANTA CLARITA VALLEY</i>	156	192	182	171
<i>TEMPLE</i>	141	177	166	159
<b>REGION II</b>	<b>724</b>	<b>766</b>	<b>656</b>	<b>707</b>
<i>CARSON</i>	143	162	146	157
<i>CENTURY</i>	300	287	250	280
<i>LENNOX</i>	188	186	168	169
<i>MARINA DEL REY</i>	19	27	22	27
<i>LOMITA</i>	55	80	51	53
<i>WEST HOLLYWOOD</i>	19	24	19	21
<b>REGION III</b>	<b>1,155</b>	<b>1,078</b>	<b>1,166</b>	<b>1,028</b>
<i>AVALON</i>	9	5	5	7
<i>INDUSTRY</i>	196	199	179	162
<i>LAKWOOD</i>	351	322	367	356
<i>NORWALK</i>	267	229	286	241
<i>PICO RIVERA</i>	94	125	116	87
<i>WALNUT REGIONAL</i>	238	198	213	175

\* 1997 Totals shown above (differ from 1997 Year In Review) reflect latest information to date.

\*\* (LAN) Palmdale's caseload number are included in Lancaster's totals

